

WAAS CH <b>65903</b> <b>W01A</b>	APP CRS <b>007°</b>	Rwy Idg <b>4206</b> TDZE <b>794</b> Apt Elev <b>798</b>
--	------------------------	---

# RNAV (GPS) RWY 1

SKYHAVEN (RCM)

RNP APCH - GPS

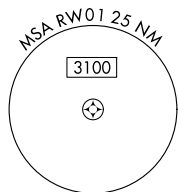
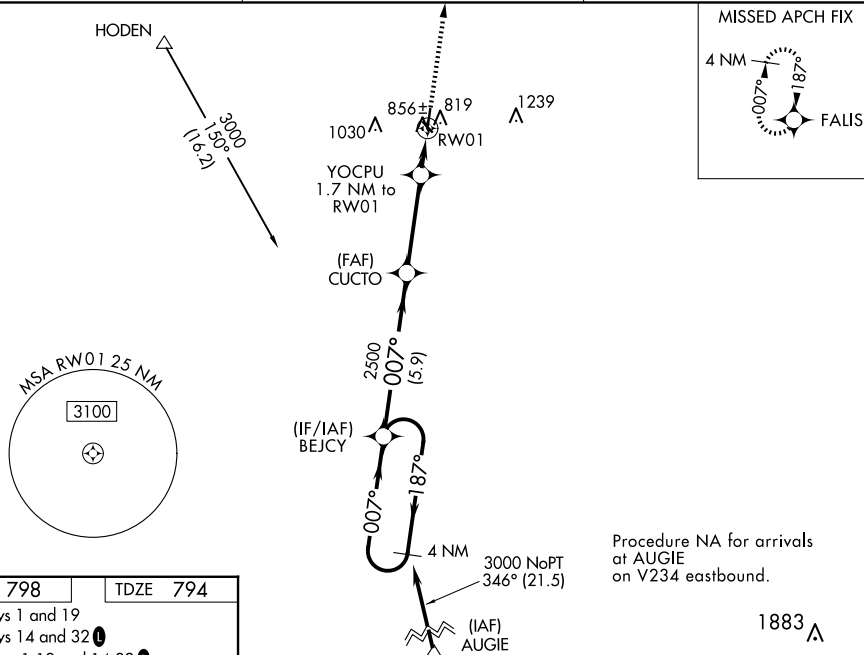
**⚠** Circling Rwy 32 NA at night. Baro-VNAV NA when using Whiteman AFB altimeter setting. For uncompensated Baro-VNAV systems, LNAV/VNAV NA below -16°C or above 54°C. Rwy 1 helicopter visibility reduction below ¼ SM NA. When local altimeter setting not received, use Knob Noster altimeter setting and increase LPV DA to 1083 feet and all visibilities ½ SM. Increase LNAV/VNAV DA to 1194 feet and all visibilities ½ SM. Increase all MDAs 40 feet and LNAV visibility Cat C ½ SM, and Circling visibility Cat C ½ SM.

**MISSED APPROACH:**  
Climb to 3000 direct  
FALIS and hold.

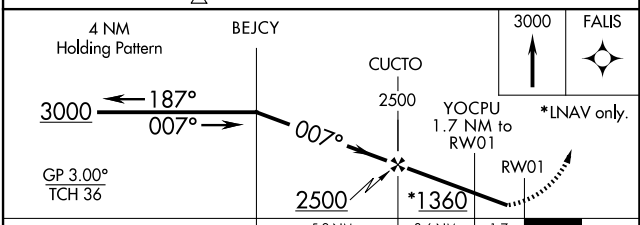
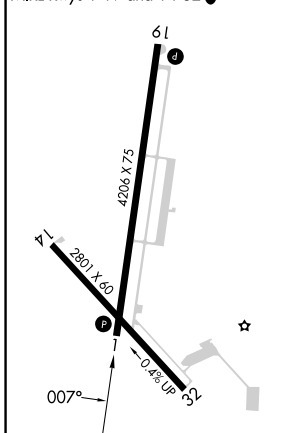
AWOS-3PT  
**119.575**

WHITEMAN APP CON \*  
**127.45 284.0**

UNICOM  
**123.0 (CTAF) 0**



ELEV <b>798</b>	TDZE <b>794</b>
REIL Rwy 1 and 19	REIL Rwy 14 and 32
MIRL Rwy 1-19 and 14-32	



CATEGORY	A	B	C	D
LPV DA	1044-1	250 (300-1)		NA
LNAV/VNAV DA	1155-1¼	361 (400-1¼)		NA
LNAV MDA	1220-1	426 (500-1)	1220-1¼ 426 (500-1¼)	NA
<b>C</b> CIRCLING	1260-1 462 (500-1)	1340-1 542 (600-1)	1380-1½ 582 (600-1½)	NA

NC-3, 15 MAY 2025 to 12 JUN 2025

NC-3, 15 MAY 2025 to 12 JUN 2025