

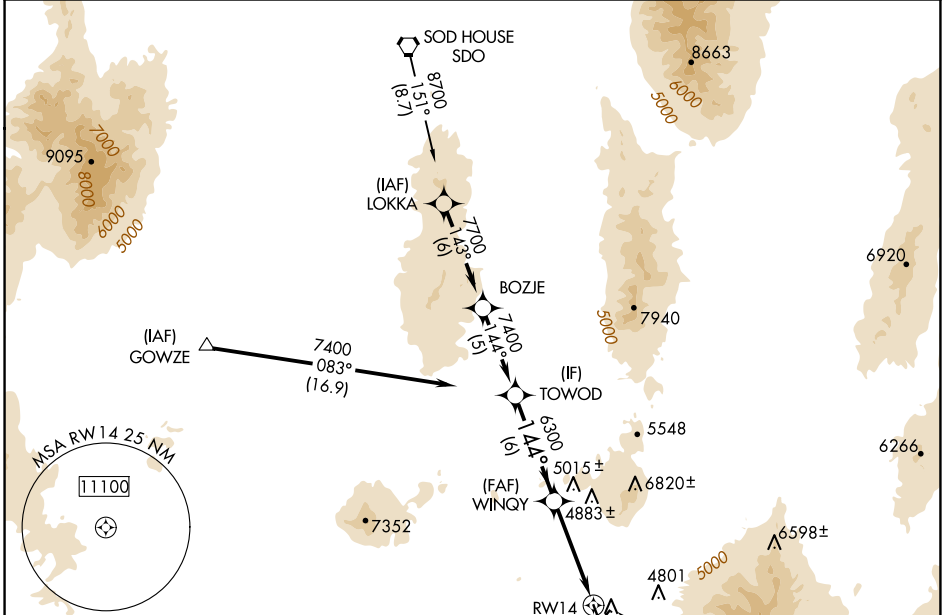
WAAS CH 62902 W14A	APP CRS 144°	Rwy Idg 7000 TDZE 4304 Apt Elev 4308
--	------------------------	---

RNAV (GPS) RWY 14

WINNEMUCCA MUNI (WMC)

RNP APCH.	<p>▽ If local altimeter setting not received, use Battle Mountain altimeter setting and increase all DAs/MDAs 140 feet. △ VDP NA when using Battle Mountain altimeter setting.</p>	<p>MISSED APPROACH: Climb to 12000 direct MUXSU and via 147° track to CUTVA and hold, continue climb-in-hold to 12000.</p>
-----------	--	--

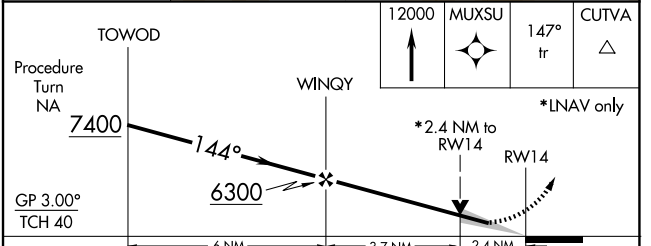
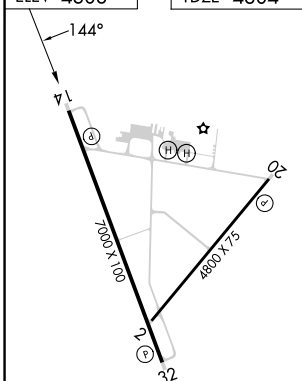
ASOS 120.175	SALT LAKE CITY CENTER 132.25 338.35	UNICOM 122.8 (CTAF) 0
------------------------	---	---------------------------------



SW-4, 15 MAY 2025 to 12 JUN 2025

SW-4, 15 MAY 2025 to 12 JUN 2025

ELEV 4308	TDZE 4304
------------------	------------------



GP 3.00° TCH 40	<table border="1"> <tr> <td>Procedure Turn NA</td> <td>WINQY</td> <td>MUXSU</td> <td>CUTVA</td> </tr> <tr> <td>7400</td> <td>6300</td> <td>147° tr</td> <td>△</td> </tr> <tr> <td colspan="4">*2.4 NM to RWY14</td> </tr> <tr> <td colspan="4">*LNAV only</td> </tr> <tr> <td colspan="4"> </td> </tr> <tr> <td colspan="4"> <table border="1"> <tr> <td>6 NM</td> <td>3.7 NM</td> <td>2.4 NM</td> <td></td> </tr> </table> </td> </tr> </table>				Procedure Turn NA	WINQY	MUXSU	CUTVA	7400	6300	147° tr	△	*2.4 NM to RWY14				*LNAV only								<table border="1"> <tr> <td>6 NM</td> <td>3.7 NM</td> <td>2.4 NM</td> <td></td> </tr> </table>				6 NM	3.7 NM	2.4 NM	
Procedure Turn NA	WINQY	MUXSU	CUTVA																													
7400	6300	147° tr	△																													
*2.4 NM to RWY14																																
*LNAV only																																
<table border="1"> <tr> <td>6 NM</td> <td>3.7 NM</td> <td>2.4 NM</td> <td></td> </tr> </table>				6 NM	3.7 NM	2.4 NM																										
6 NM	3.7 NM	2.4 NM																														
CATEGORY	A	B	C	D																												
LPV DA	4843-2 539 (600-2)																															
LNAV MDA	5100-1 796 (800-1)	5100-1¼ 796 (800-1¼)	5100-2¼ 796 (800-2¼)	5100-2½ 796 (800-2½)																												