

(ROCKY1.ROCKY) 23334
ROCKY ONE DEPARTURE

AL-6452 (FAA)

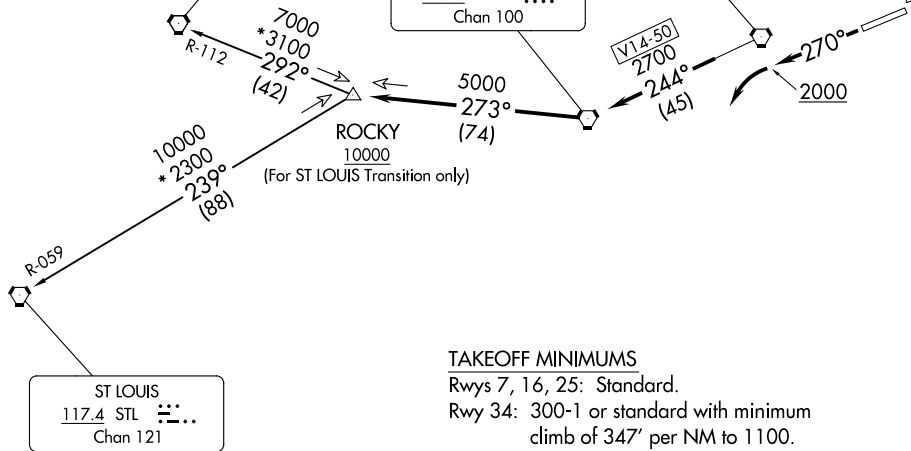
INDIANAPOLIS RGNL (MQJ)
 INDIANAPOLIS, INDIANA

AWOS-3PT
 124.175
 CLNC DEL
 119.25
 INDIANAPOLIS DEP CON
 127.15 317.8

SPINNER
 112.7 SPI
 Chan 74

TERRE HAUTE
 115.3 TTH
 Chan 100

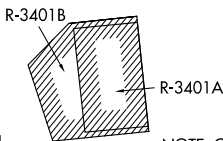
BRICKYARD
 116.3 VHP
 Chan 110



TAKEOFF MINIMUMS

Rwys 7, 16, 25: Standard.
 Rwy 34: 300-1 or standard with minimum climb of 347' per NM to 1100.

- NOTE: RADAR required.
- NOTE: Select appropriate localizer/DME frequency/channel prior to departure.
- NOTE: Turbojets accelerate to 250K until reaching 10000, if unable advise ATC.
- NOTE: Assigned to aircraft with a requested altitude of 11000 or above.



NOTE: Chart not to scale.

DEPARTURE ROUTE DESCRIPTION

TAKEOFF RWY 25: Climb heading 270° to 2000 before turning left. Then on assigned heading to assigned altitude. Thence

DEPARTING ALL OTHER AUTHORIZED RUNWAYS: Climb on assigned heading to assigned altitude. Thence

. . . . expect RADAR vectors to join VHP R-244 to TTH VORTAC, then via TTH R-273 to ROCKY INT then via transition or assigned route. Expect clearance to requested altitude ten minutes after departure.

SPINNER TRANSITION (ROCKY1.SPI): From over ROCKY INT on SPI R-112 to SPI VORTAC.
ST LOUIS TRANSITION (ROCKY1.STL): From over ROCKY INT on STL R-059 to STL VORTAC.

ROCKY ONE DEPARTURE
(ROCKY1.ROCKY) 01FEB18

INDIANAPOLIS, INDIANA
 INDIANAPOLIS RGNL (MQJ)

EC-2, 15 MAY 2025 to 12 JUN 2025

EC-2, 15 MAY 2025 to 12 JUN 2025