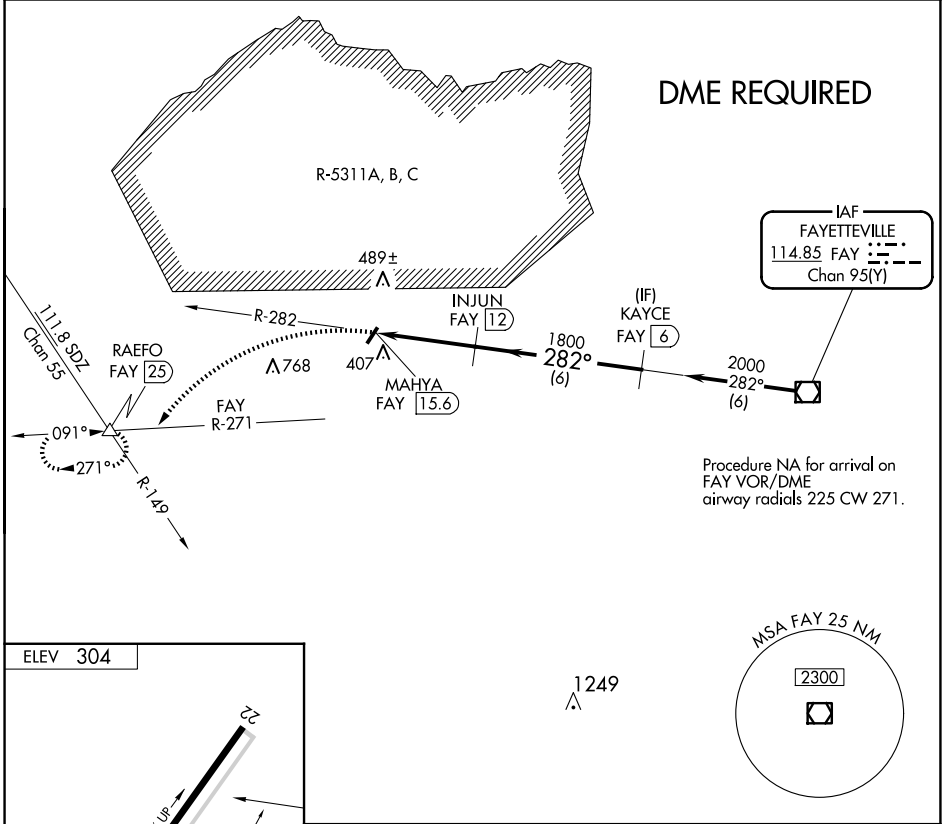


VOR/DME FAY 114.85 Chan 95(Y)	APP CRS 282°	Rwy Idg TDZE Apt Elev N/A N/A 304
--	------------------------	---

VOR-A

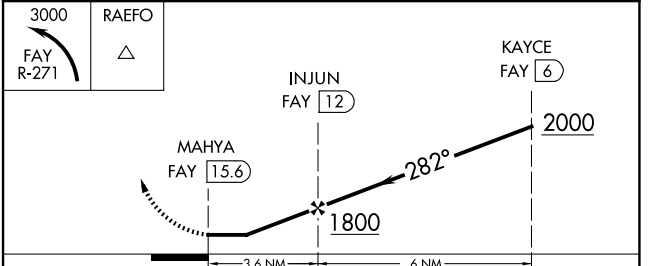
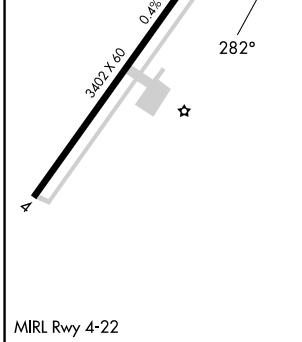
P K AIRPARK (5W4)

<p>▼ DME required. Procedure NA at night. ▲ NA Use Fayetteville altimeter setting.</p>	<p>MISSED APPROACH: Climbing left turn to 3000 on FAY VOR/DME R-271 to RAEFO/FAY 25 DME and hold.</p>
<p>FAYETTEVILLE APP CON 127.8 290.25</p>	<p>UNICOM 123.0 (CTAF)</p>



SE-2, 15 MAY 2025 to 12 JUN 2025

SE-2, 15 MAY 2025 to 12 JUN 2025



CATEGORY	A	B	C	D
☑ CIRCLING	840-1 536 (600-1)	860-1 556 (600-1)	920-1 ³ / ₄ 616 (700-1 ³ / ₄)	NA