

RAEFORD, NORTH CAROLINA

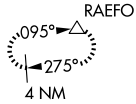
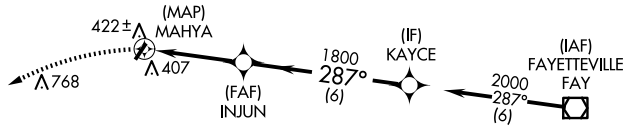
AL-6439 (FAA)

23110

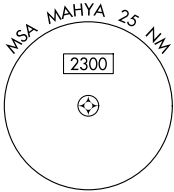
APP CRS	Rwy Idg	N/A
287°	TDZE	N/A
	Apt Elev	304

RNAV (GPS)-A
P K AIRPARK (5W4)

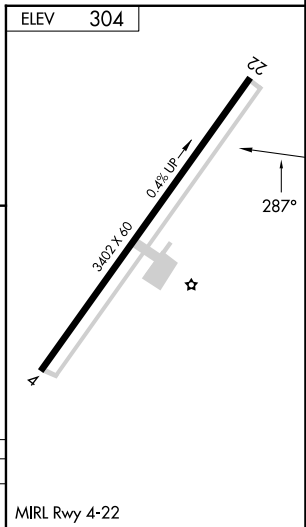
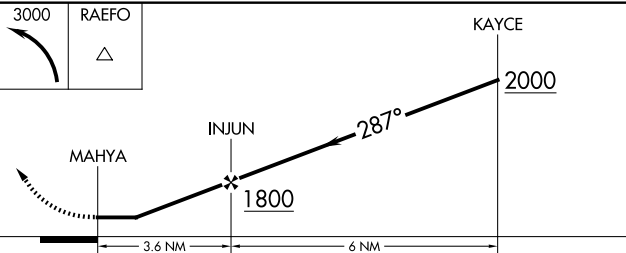
<p>▼ DME/DME RNP-0.3 NA. Procedure NA at night. Use Fayetteville altimeter setting.</p> <p>▲ NA</p>	<p>MISSED APPROACH: Climbing left turn to 3000 direct RAEFO and hold.</p>
<p>FAYETTEVILLE APP CON 127.8 290.25</p>	<p>UNICOM 123.0 (CTAF)</p>



Procedure NA for arrival on FAY VOR/DME airway radials 225 CW 009.



1249 ▲



CATEGORY	A	B	C	D
☐ CIRCLING	840-1 536 (600-1)	860-1 556 (600-1)	920-1¾ 616 (700-1¾)	NA

MIRL Rwy 4-22

RAEFORD, NORTH CAROLINA
Orig 01FEB18

35°01'N-79°11'W

P K AIRPARK (5W4)
RNAV (GPS)-A

SE-2, 15 MAY 2025 to 12 JUN 2025

SE-2, 15 MAY 2025 to 12 JUN 2025