

WAAS CH 69228 W36A	APP CRS 005°	Rwy Idg TDZE Apt Elev	5000 541 545
--	------------------------	-----------------------------	---

RNAV (GPS) RWY 36

MEXIA-LIMESTONE COUNTY (L.X.Y)

▽ DME/DME RNP-0.3 NA. Helicopter visibility reduction below 3/4 SM NA. Obtain local altimeter setting on CTAF; when not received, use Waco Rgnl altimeter setting and increase all MDA 100 feet; increase LP Cat C visibility 1/8 mile and LNAV and circling Cat C visibility 1/4 mile.

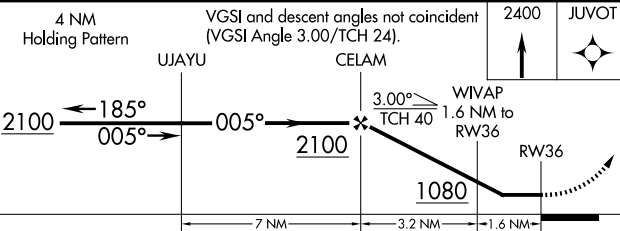
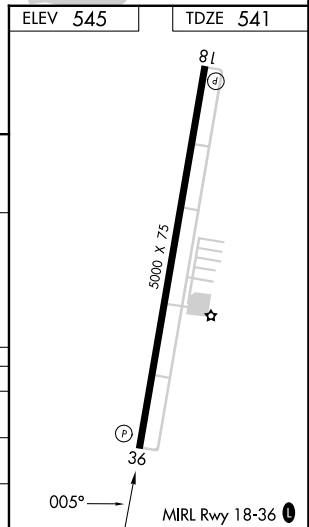
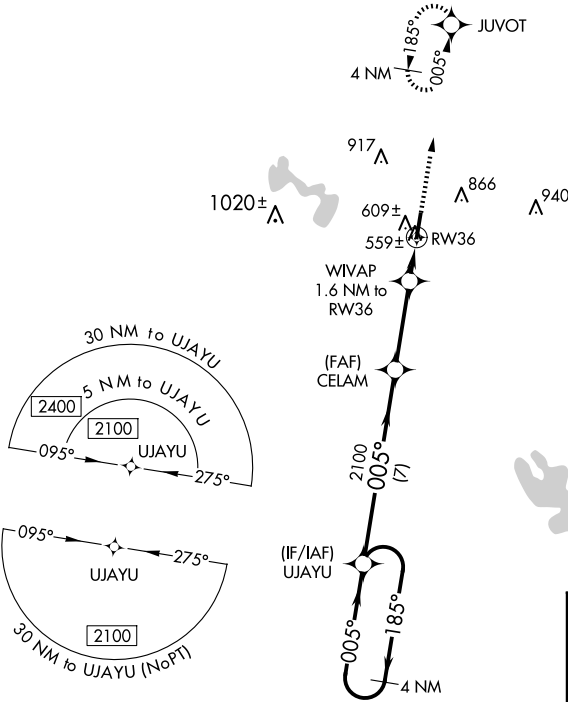
△ NA

MISSED APPROACH:
Climb to 2400 direct JUVOT and hold.

AWOS-3
127.275

WACO APP CON★
127.65 352.0

UNICOM
122.8 (CTAF)



CATEGORY	A	B	C	D
LP MDA	860-1	319 (400-1)		NA
LNAV MDA	880-1	339 (400-1)		NA
CIRCLING	960-1 415 (500-1)	1180-1 635 (700-1)	1220-2 675 (700-2)	NA