

APP CRS **194°**
 Rwy Idg **6001**
 TDZE **3701**
 Apt Elev **3706**

RNAV (GPS) RWY 19
 MOORE COUNTY (DUX)

RNP APCH - GPS.

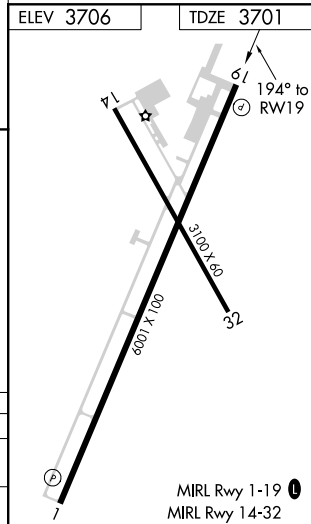
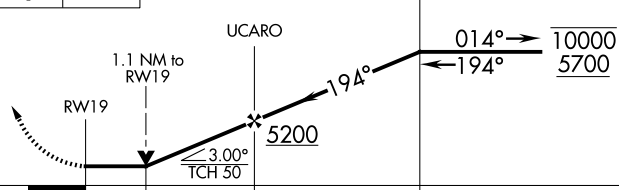
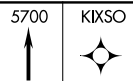
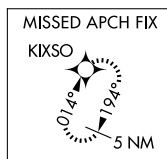
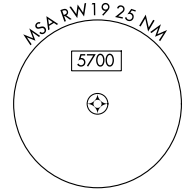
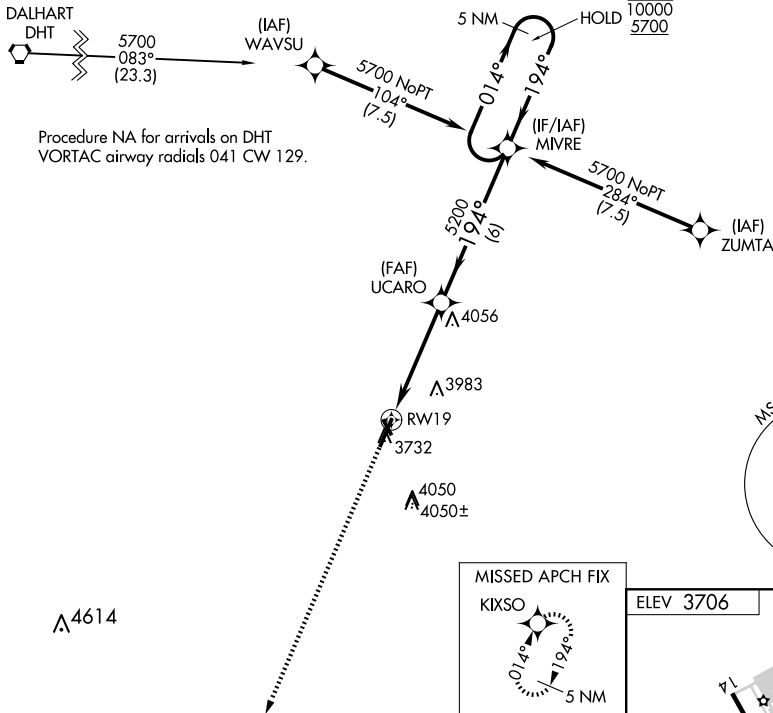
▼ Circling Rwy 14, 32 NA at night.
▲ Rwy 19 helicopter visibility reduction below 3/4 SM NA.

MISSED APPROACH: Climb to 5700 direct KIXSO and hold.

AWOS-3
118.075

ALBUQUERQUE CENTER
127.85 285.475

UNICOM
122.8 (CTAF) 0



CATEGORY	A	B	C	D
LNVA MDA	4100-1	399 (400-1)	4100-1 1/8	399 (400-1 1/8)
C CIRCLING	4100-1 394 (400-1)	4300-1 594 (600-1)	4400-2 694 (700-2)	4400-2 1/4 694 (700-2 1/4)

MIRL Rwy 1-19 **0**
 MIRL Rwy 14-32

SC-2, 15 MAY 2025 to 12 JUN 2025

SC-2, 15 MAY 2025 to 12 JUN 2025