

WAAS CH <b>45840</b> <b>W20A</b>	APP CRS <b>201°</b>	Rwy Idg TDZE Apt Elev	<b>5902</b> <b>7610</b> <b>7611</b>
--	------------------------	-----------------------------	---

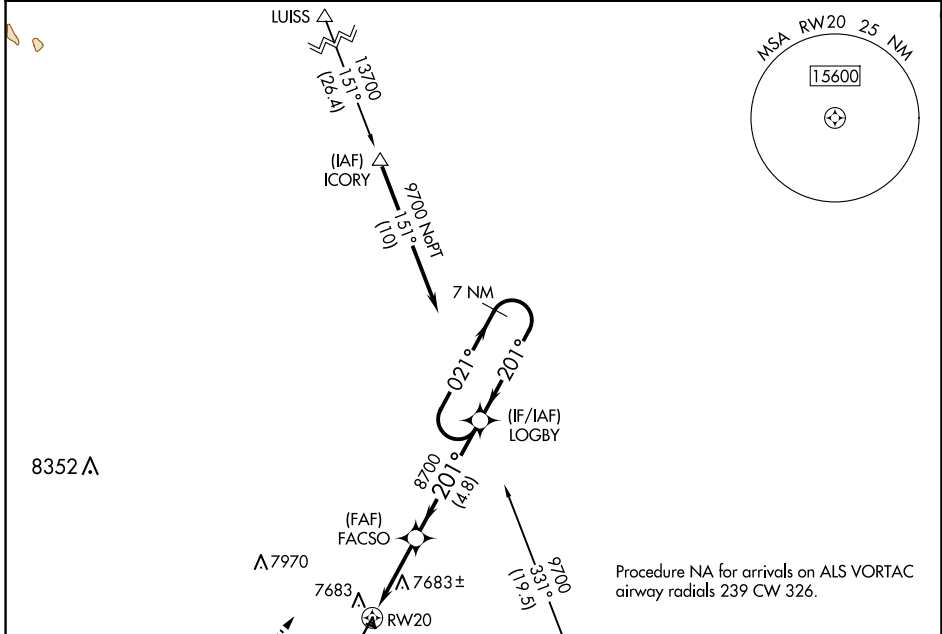
# RNAV (GPS) RWY 20

MONTE VISTA MUNI (MVI)

**NA** Circling NA to Rwys 10, 28, 16 and 34. DME/DME RNP-0.3 NA. Baro-VNAV NA. Use Alamosa altimeter setting.

MISSED APPROACH: (Do not exceed 190K until LOGBY) Climb to 8100 on heading 201° then climbing right turn to 9700 direct LOGBY and hold.

ALS AWOS-3 <b>135.175</b>	DENVER CENTER <b>128.375 379.95</b>	UNICOM <b>122.8 (CTAF)</b>
------------------------------	--	-------------------------------



8100 ↑  
hdg 201°

LOGBY

VGSI and RNAV glidepath not coincident (VGSI Angle 3.00/TCH 38).

7 NM Holding Pattern

LOGBY

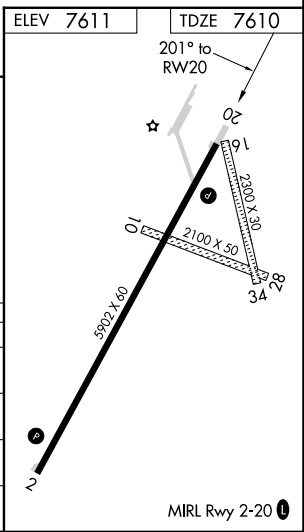
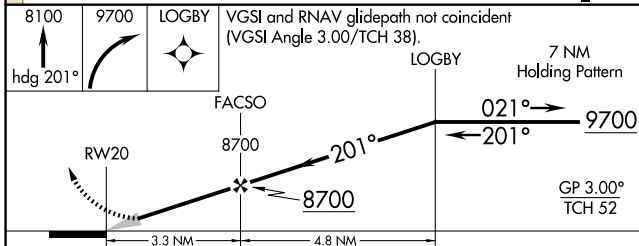
FACSO

RW20

8700

8700

GP 3.00° TCH 52



CATEGORY	A	B	C	D
LPV DA		7894-1	284 (300-1)	
LNAV/VNAV DA		7894-1	284 (300-1)	
LNAV MDA		7980-1	370 (400-1)	
<b>C</b> CIRCLING	8060-1 449 (500-1)	8080-1 469 (500-1)	8180-1½ 569 (600-1½)	8360-2½ 749 (800-2½)

SW-1, 15 MAY 2025 to 12 JUN 2025

SW-1, 15 MAY 2025 to 12 JUN 2025