

# COPTER RNAV (GPS) RWY 25

WAAS CH 95177 W25A	APCH CRS 250°	Rwy ldg TDZE Arpt Elev	3860 487 487
--------------------------	------------------	------------------------------	--------------------

(- USA)

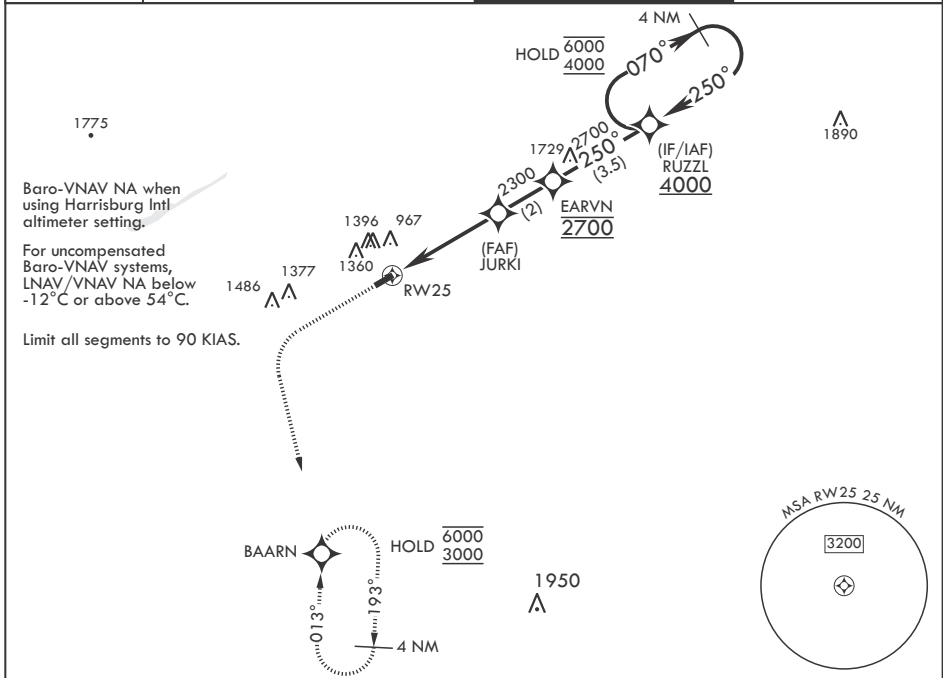
MUIR AHP (KMUI)

RNP APCH - GPS

▼ \* When local altimeter not received, use Harrisburg Intl altimeter setting. Increase all DA by 64', vis by 1/8 miles.  
 \*\* When local altimeter not received, use Harrisburg Intl altimeter setting. Increase MDA 80', vis 1/4 miles.

MISSED APPROACH: Climb to 1700 then climbing left turn to 3000 direct to BAARN and hold.

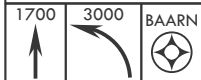
ASOS 124.175	HARRISBURG APP CON/DEP CON 118.25 269.45	TOWER ★ 126.2 (CTAF) 0 290.325	GND CON 135.675 269.525
-----------------	---	-----------------------------------	----------------------------



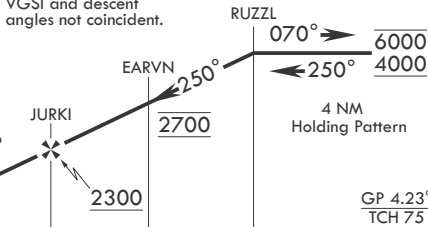
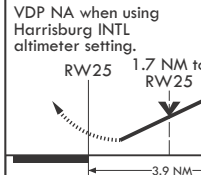
Baro-VNAV NA when using Harrisburg Intl altimeter setting.

For uncompensated Baro-VNAV systems, LNAV/VNAV NA below -12°C or above 54°C.

Limit all segments to 90 KIAS.

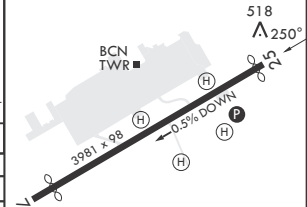


VGSI and descent angles not coincident.



ELEV 487	TDZE 487
----------	----------

Rwy 7 ldg 3631'  
Rwy 25 ldg 3860'



CATEGORY	COPTER	
LPV DA*	816-1	329 (400-1)
LNAV/VNAV DA*	1166-1 <sup>7</sup> / <sub>8</sub>	679 (700-1 <sup>7</sup> / <sub>8</sub> )
LNAV MDA**	1300-1	813 (900-1)
WITH HARRISBURG INTL ALTIMETER SETTING		
LPV DA	880-1 <sup>1</sup> / <sub>8</sub>	393 (400-1 <sup>1</sup> / <sub>8</sub> )
LNAV/VNAV DA	1230-2	743 (800-2)
LNAV MDA	1380-1 <sup>1</sup> / <sub>4</sub>	893 (900-1 <sup>1</sup> / <sub>4</sub> )

MIRL all Rwys  
REIL all Rwys

# COPTER RNAV (GPS) RWY 25

NE-4, 15 MAY 2025 to 12 JUN 2025

NE-4, 15 MAY 2025 to 12 JUN 2025