

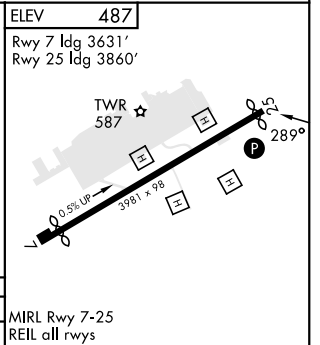
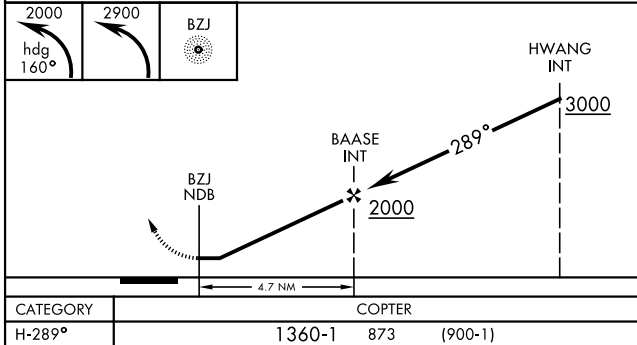
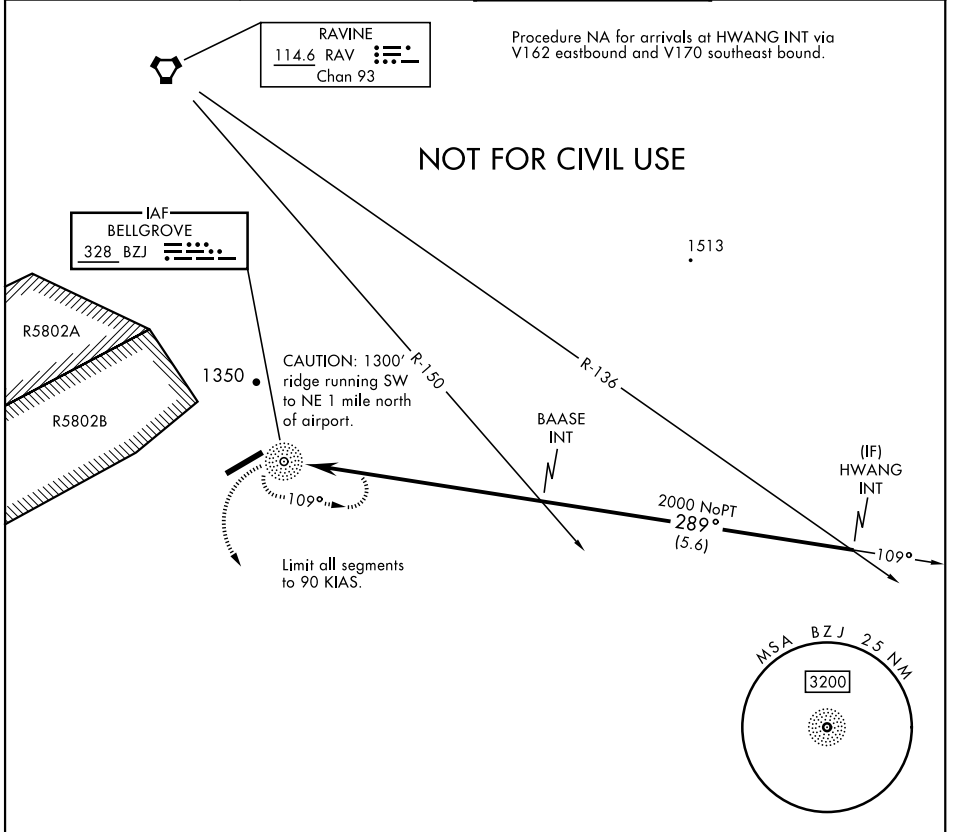
COPTER NDB Z-289⁰

NDB BZJ 328	APCH CRS 289°	Rwy ldg TDZE Arprt Elev N/A N/A 487	[USA]	MUIR AHP (KMUI)
-----------------------	-------------------------	--	-------	-----------------

▼ VOR receiver required for this approach.
When local altimeter setting not received, use Harrisburg Intl altimeter and increase MDA by 80 ft, vis by ¼ mile, and ceiling by 100 ft.

MISSED APPROACH: Climb to 2000 via hdg 160° then climbing left turn to 2900 direct BZJ NDB and hold. Continue climb in hold.

ASOS 124.175	HARRISBURG APP CON 118.25 269.45	MUIR TOWER ★ 126.2 (CTAF) 0 290.325	GND CON 135.675 269.525
------------------------	--	---	-----------------------------------



CATEGORY	COPTER			MIRL Rwy 7-25
H-289°	1360-1	873	(900-1)	REIL all rwys

NE-4, 15 MAY 2025 to 12 JUN 2025

NE-4, 15 MAY 2025 to 12 JUN 2025