

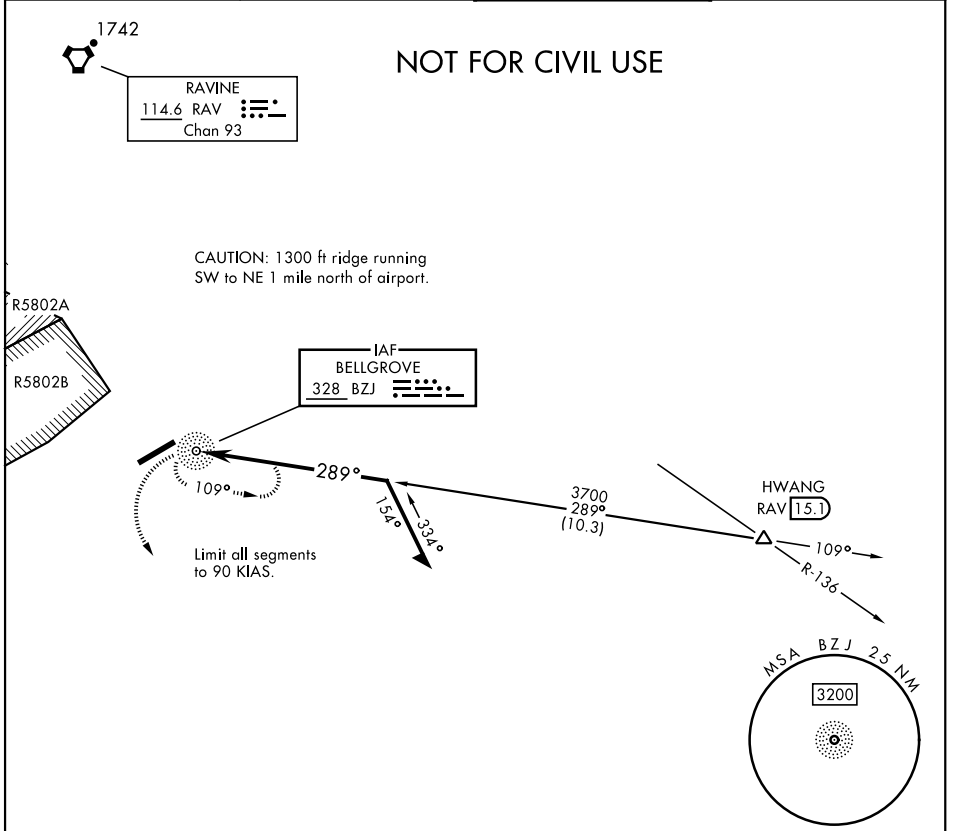
COPTER NDB Y-289^o

NDB BZJ 328	APCH CRS 289°	Rwy Idg TDZE Arprt Elev N/A 487	[USA]	MUIR AHP (KMUI)
-----------------------	-------------------------	--	-------	-----------------

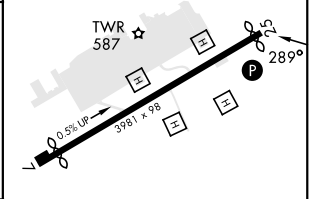
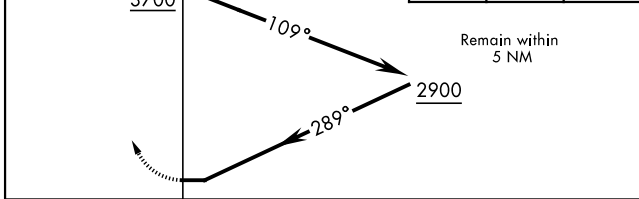
▼ When local altimeter setting not received, use Harrisburg Intl altimeter setting.

MISSED APPROACH: Climb to 2000 via heading 160° then climbing left turn to 2900 direct BZJ NDB and hold. Continue climb in hold.

ASOS 124.175	HARRISBURG APP CON 118.25 269.45	TOWER ★ 126.2 (CTAF) 0 290.325	GND CON 135.675 269.525
------------------------	--	--	-----------------------------------



2000	2900	BZJ	ELEV 487	Rwy 7 Idg 3631'	Rwy 25 Idg 3860'
hdg 160°					



CATEGORY	COPTER		MIRL Rwy 7-25
H-289°	1480-1¼	993 (1000-1¼)	REIL all rwys

COPTER NDB Y-289^o

NE-4, 15 MAY 2025 to 12 JUN 2025

NE-4, 15 MAY 2025 to 12 JUN 2025