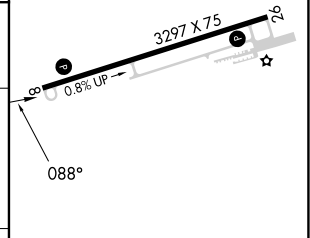
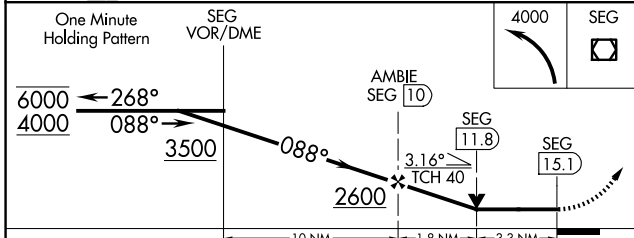
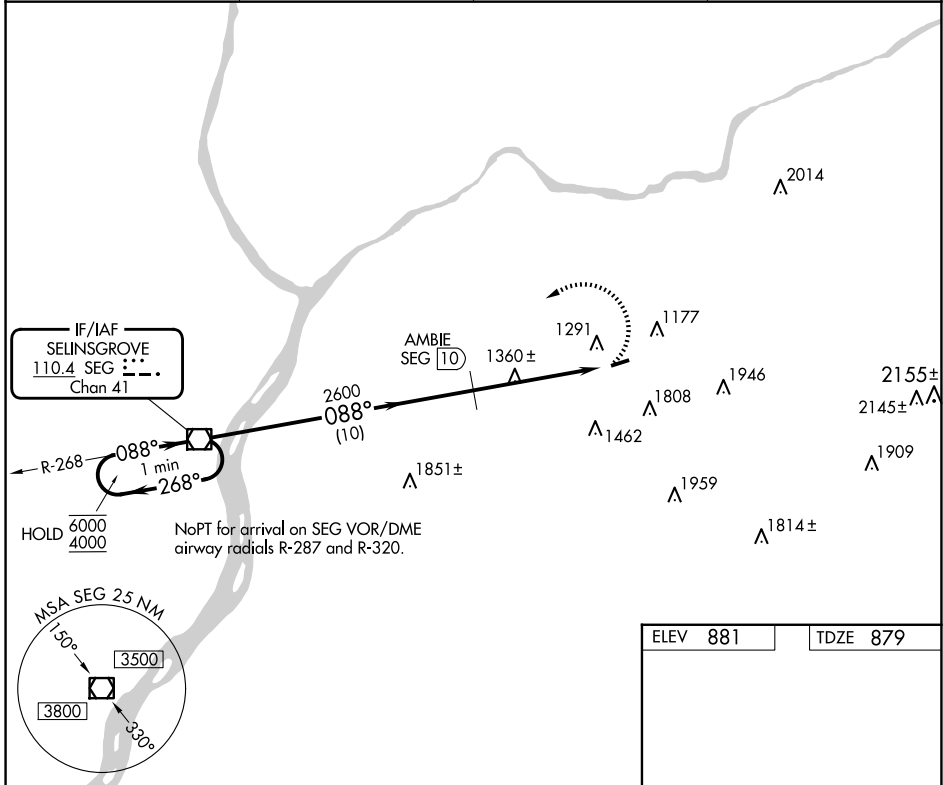


VOR/DME SEG <b>110.4</b> Chan 41	APP CRS <b>088°</b>	Rwy Idg TDZE <b>3297</b> <b>879</b> Apt Elev <b>881</b>
--	------------------------	---

**VOR RWY 8**  
NORTHUMBERLAND COUNTY (N79)

DME required.	MISSED APPROACH: Climbing left turn to 4000 direct SEG VOR/DME and hold.
▽ Rwy 8 helicopter visibility reduction below ¼ SM NA. ▲ NA When local altimeter setting not received, use Selinsgrove altimeter setting and increase all MDAs 100 feet.	

AWOS-3 <b>119.175</b>	HARRISBURG APP CON <b>118.25 269.45</b>	UNICOM <b>122.8</b> (CTAF)	<b>121.8</b> 0
--------------------------	--	-------------------------------	----------------



CATEGORY	A	B	C	D
S-8	1960-1¼ 1081 (1100-1¼)	1960-1½ 1081 (1100-1½)	1960-3 1081 (1100-3)	NA
CIRCLING	1960-1¼ 1079 (1100-1¼)	1960-1½ 1079 (1100-1½)	2120-3 1239 (1300-3)	NA

MIRL Rwy 8-26 0					
REIL Rws 8 and 26					
FAF to MAP 5.1 NM					
Knots	60	90	120	150	180
Min:Sec	5:06	3:24	2:33	2:02	1:42

NE-4, 15 MAY 2025 to 12 JUN 2025

NE-4, 15 MAY 2025 to 12 JUN 2025