

WAAS CH <b>87024</b> <b>W08A</b>	APP CRS <b>083°</b>	Rwy Idg <b>3297</b> TDZE <b>879</b> Apt Elev <b>881</b>
--	------------------------	---

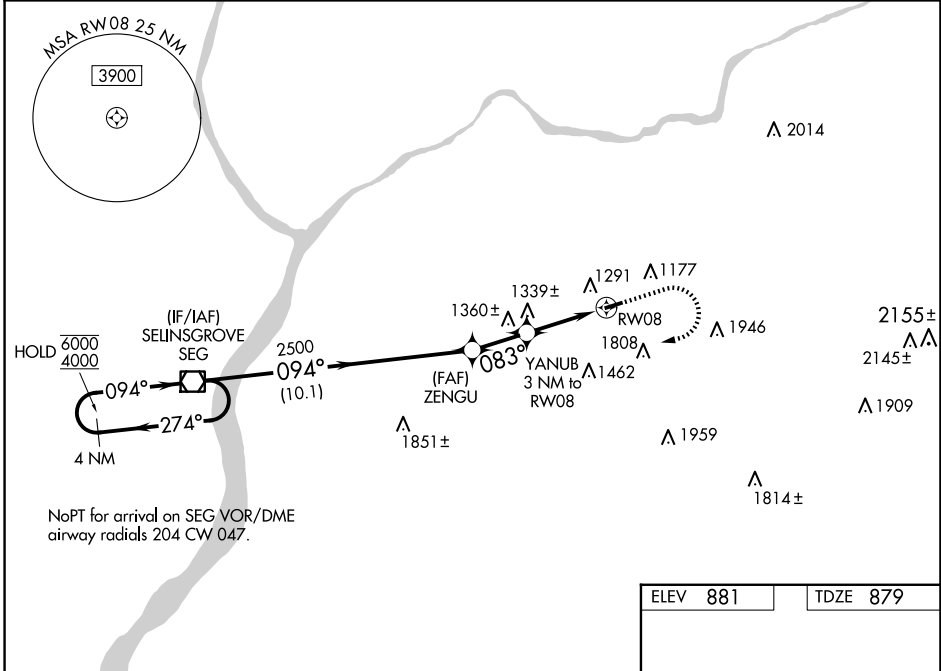
**RNAV (GPS) RWY 8**  
NORTHUMBERLAND COUNTY (N79)

RNP APCH - GPS.

Baro-VNAV and VDP NA when using Selingsgrove altimeter setting. Rwy 8 helicopter visibility reduction below 3/4 SM NA. For uncompensated Baro-VNAV systems, LNAV/VNAV NA below -16°C or above 54°C. When local altimeter setting not received, use Selingsgrove altimeter setting and increase LPV DA to 1221 feet; increase LNAV/VNAV DA to 1695 feet and all visibilities 1/2 SM. Increase all MDAs 100 feet and LNAV visibility Cat C 1/2 SM.

**MISSED APPROACH:**  
Climb to 2300 then climbing right turn to 4000 direct SEG VOR/DME and hold.

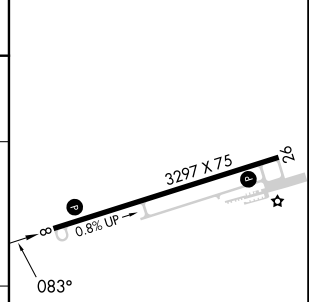
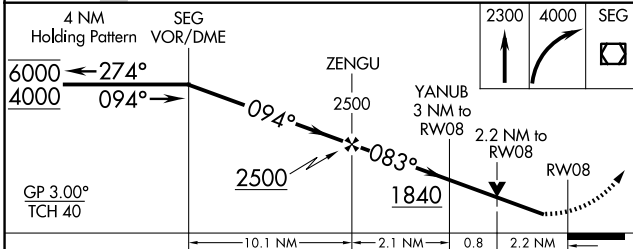
AWOS-3 <b>119.175</b>	HARRISBURG APP CON <b>118.25 269.45</b>	UNICOM <b>122.8 (CTAF)</b>	<b>121.8</b>
--------------------------	--	-------------------------------	--------------



NE-4, 15 MAY 2025 to 12 JUN 2025

NE-4, 15 MAY 2025 to 12 JUN 2025

ELEV 881	TDZE 879
----------	----------



CATEGORY	A	B	C	D
LPV DA	1129-1	250 (300-1)		NA
LNAV/VNAV DA	1603-2	724 (800-2)		NA
LNAV MDA	1620-1 741 (800-1)	1620-1 1/4 741 (800-1 1/4)	1620-2 741 (800-2)	NA
CIRCLING	1820-1 1/4 939 (1000-1 1/4)	1880-1 1/2 999 (1000-1 1/2)	2120-3 1239 (1300-3)	NA

MIRL Rwy 8-26

REIL Rws 8 and 26