

|  |                        |                             |   |
|--|------------------------|-----------------------------|---|
| WAAS<br>CH <b>50424</b><br><b>W26A</b> | APP CRS<br><b>264°</b> | Rwy Idg<br>TDZE<br>Apt Elev | <b>3297</b><br><b>881</b><br><b>881</b> |
|--|------------------------|-----------------------------|---|

# RNAV (GPS) RWY 26

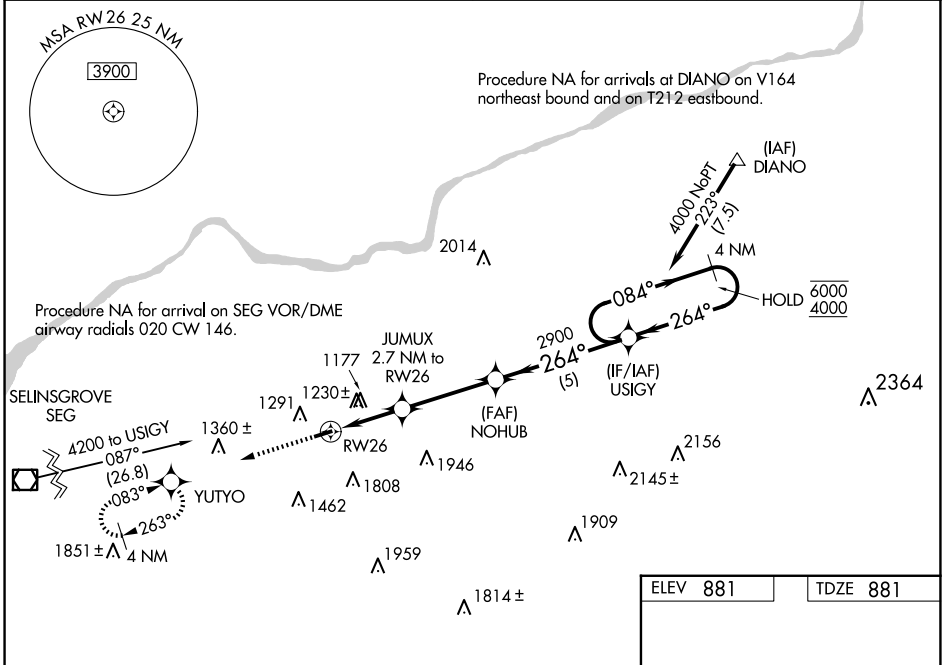
NORTHUMBERLAND COUNTY (N79)

RNP APCH - GPS.

**▽** Baro-VNAV and VDP NA when using Selinsgrove altimeter setting. Rwy 26 helicopter visibility reduction below  $\frac{3}{4}$  SM NA. For uncompensated Baro-VNAV systems, LNAV/VNAV NA below -16°C or above 54°C. When local altimeter setting not received, use Selinsgrove altimeter setting and increase LPV DA to 1529 feet and all visibilities  $\frac{1}{4}$  SM. Increase LNAV/VNAV DA to 1651 feet and all visibilities  $\frac{5}{8}$  SM. Increase all MDAs 100 feet and LNAV visibility Cat C  $\frac{1}{4}$  SM.

**MISSED APPROACH:**  
Climb to 3400 direct YUTYO and hold, continue climb-in-hold to 3400.

|                          |  |                               |                       |
|--------------------------|--|-------------------------------|-----------------------|
| AWOS-3<br><b>119.175</b> | HARRISBURG APP CON<br><b>118.25 269.45</b> | UNICOM<br><b>122.8 (CTAF)</b> | <b>121.8</b> <b>0</b> |
|--------------------------|--|-------------------------------|-----------------------|



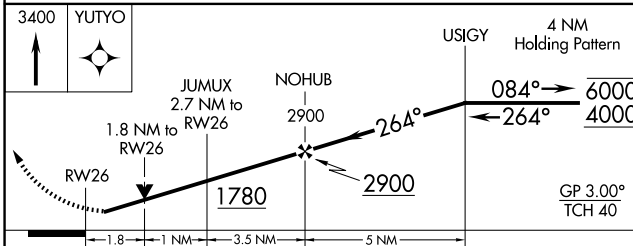
NE-4, 15 MAY 2025 to 12 JUN 2025

NE-4, 15 MAY 2025 to 12 JUN 2025

|          |          |
|----------|----------|
| ELEV 881 | TDZE 881 |
|----------|----------|

GP 3.00°  
TCH 40

MIRL Rwy 8-26 **0**  
REIL Rws 8 and 26



| CATEGORY     | A  | B  | C                    | D  |
|--------------|--|--|----------------------|----|
| LPV DA       | 1437-1 $\frac{5}{8}$                             | 556 (600-1 $\frac{5}{8}$ )                       |                      | NA |
| LNAV/VNAV DA | 1559-1 $\frac{7}{8}$                             | 678 (700-1 $\frac{7}{8}$ )                       |                      | NA |
| LNAV MDA     | 1480-1 599 (600-1)                               | 1480-1 $\frac{3}{4}$ 599 (600-1 $\frac{3}{4}$ )  |                      | NA |
| CIRCLING     | 1820-1 $\frac{1}{4}$ 939 (1000-1 $\frac{1}{4}$ ) | 1880-1 $\frac{1}{2}$ 999 (1000-1 $\frac{1}{2}$ ) | 2120-3 1239 (1300-3) | NA |