

# RNAV (RNP) Z RWY 25

EAGLE COUNTY RGNL (EGE)


APP CRS	Rwy Idg	<b>8000</b>
<b>253°</b>	TDZE	<b>6540</b>
	Apt Elev	<b>6547</b>

RNP AR APCH-GPS, RF, MIN RNP 0.11. Authorization required. Missed approach requires RNP <1.00.

**7** When local climeter setting not received, procedure NA. For uncompensated Baro-VNAV systems, procedure NA below -27°C or above 33°C. For inop ALS increase RNP 0.11\* all visibilities to ½ SM.

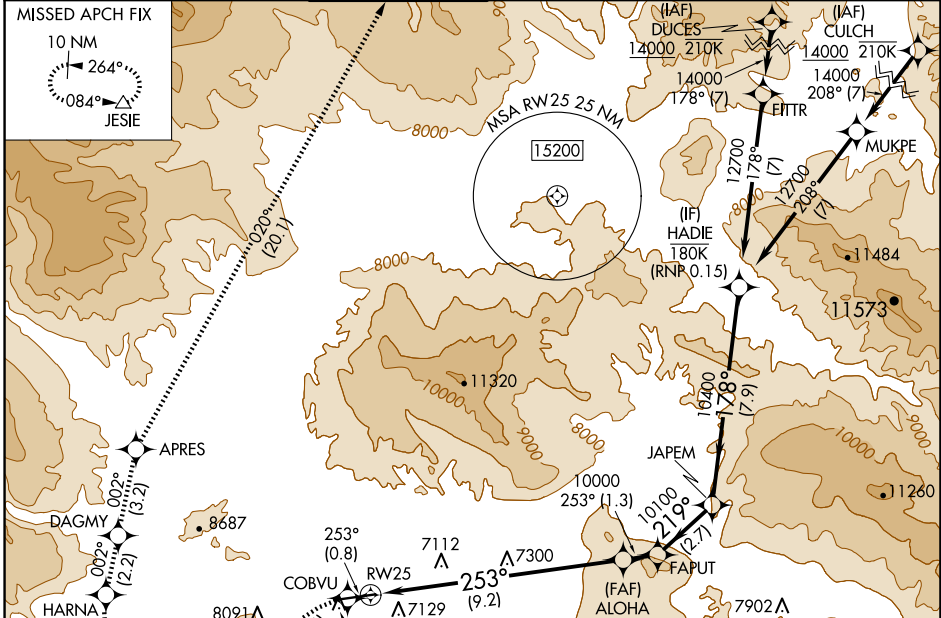
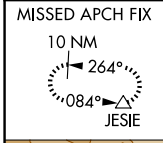
**33** -20°C

**MALSR**

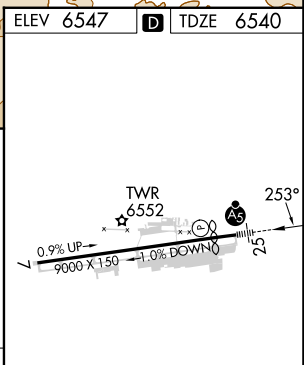
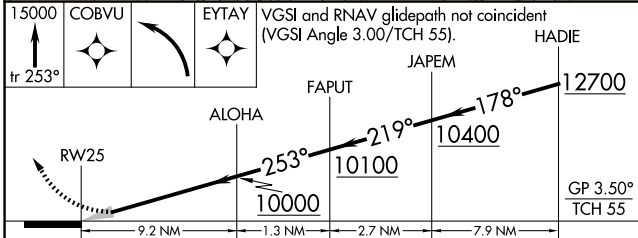


**MISSED APPROACH:** (Do not exceed 185K until HARNA) Climb to 15000 on the RNAV missed approach route to JESIE and hold.  
\*Missed approach requires minimum climb of 281 feet per NM to 9000.

ATIS	DENVER CENTER	EAGLE TOWER *	GND CON	CLNC DEL	DENVER CLNC DEL
<b>135.575</b>	<b>128.65 282.2</b>	<b>119.8 (CTAF) 0</b>	<b>121.8</b>	<b>124.75</b>	<b>124.75</b> (When tower closed)



ELEV 6547	<b>D</b> TDZE 6540
-----------	--------------------



CATEGORY	A	B	C	D
RNP 0.11 DA*	NA		6814-½ 274 (300-½)	
RNP 0.11 DA	NA		7181-1⅓ 641 (700-1⅓)	

## AUTHORIZATION REQUIRED

HIRL Rwy 7-25 **0**  
REIL Rwy 7 **0**

SW-1, 15 MAY 2025 to 12 JUN 2025

SW-1, 15 MAY 2025 to 12 JUN 2025