

WAAS CH <b>93530</b> <b>W04A</b>	APP CRS <b>040°</b>	Rwy Idg TDZE Apt Elev	<b>3600</b> <b>1168</b> <b>1171</b>
--	------------------------	-----------------------------	---

# RNAV (GPS) RWY 4

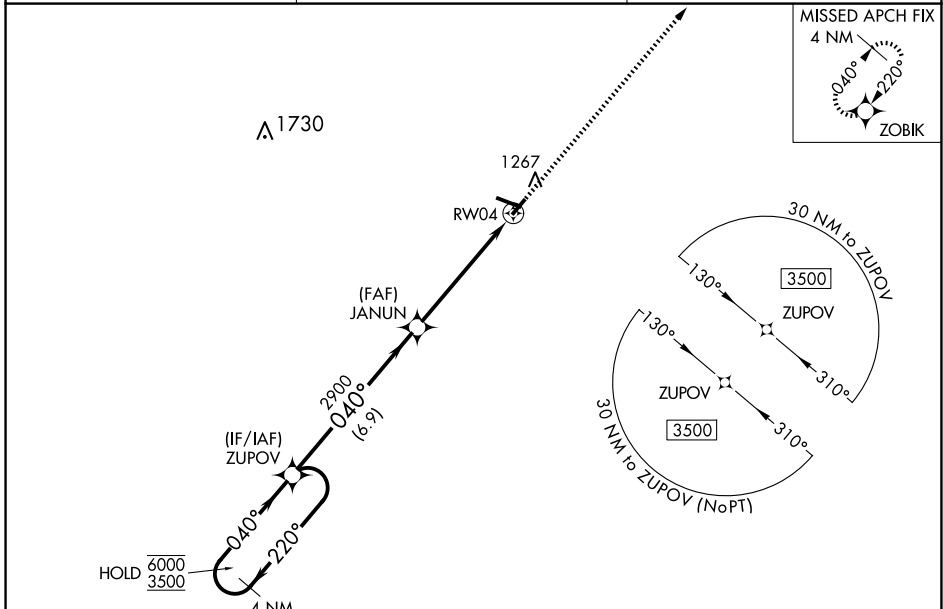
IOWA COUNTY (MRJ)

RNP APCH - GPS.

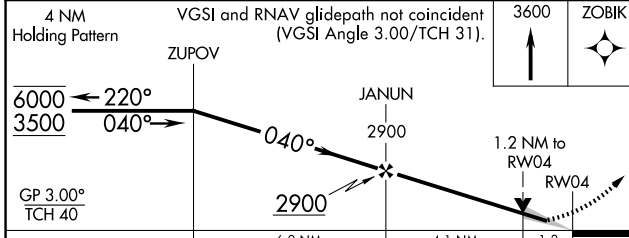
**⚠** Baro-VNAV and VDP NA when using Platteville altimeter setting. For uncompensated Baro-VNAV systems, LNAV/VNAV NA below -17°C or above 54°C. When local altimeter setting not received, use Platteville altimeter setting and increase LPV DA to 1473 feet, increase LNAV/VNAV DA to 1498 feet, increase all MDAs 60 feet, and LNAV visibility Cat C ¼ SM.

**MISSED APPROACH:** Climb to 3600 direct ZOBIK and hold.

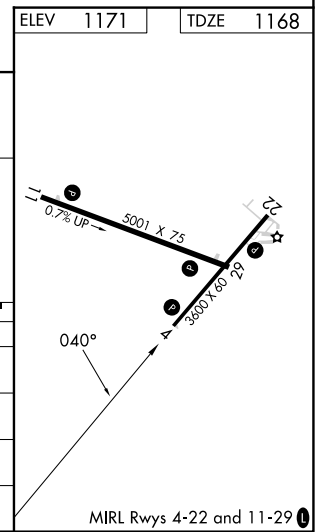
AWOS-3 <b>118.525</b>	CHICAGO CENTER <b>133.95 281.4</b>	UNICOM <b>122.8 (CTAF) 0</b>
--------------------------	---------------------------------------	---------------------------------



ELEV 1171	TDZE 1168
-----------	-----------



CATEGORY	A	B	C	D
LPV DA	1418-1	250 (300-1)		NA
LNAV/VNAV DA	1443-1	275 (300-1)		NA
LNAV MDA	1580-1	412 (500-1)	1580-1½ 412 (500-1½)	NA
CIRCLING	1620-1 449 (500-1)	1640-1 469 (500-1)	1640-1½ 469 (500-1½)	NA



EC-3, 15 MAY 2025 to 12 JUN 2025

EC-3, 15 MAY 2025 to 12 JUN 2025