

WAAS CH 72630 W11A	APP CRS 111°	Rwy Idg TDZE Apt Elev	5001 1152 1171
--	------------------------	-----------------------------	---

RNAV (GPS) RWY 11

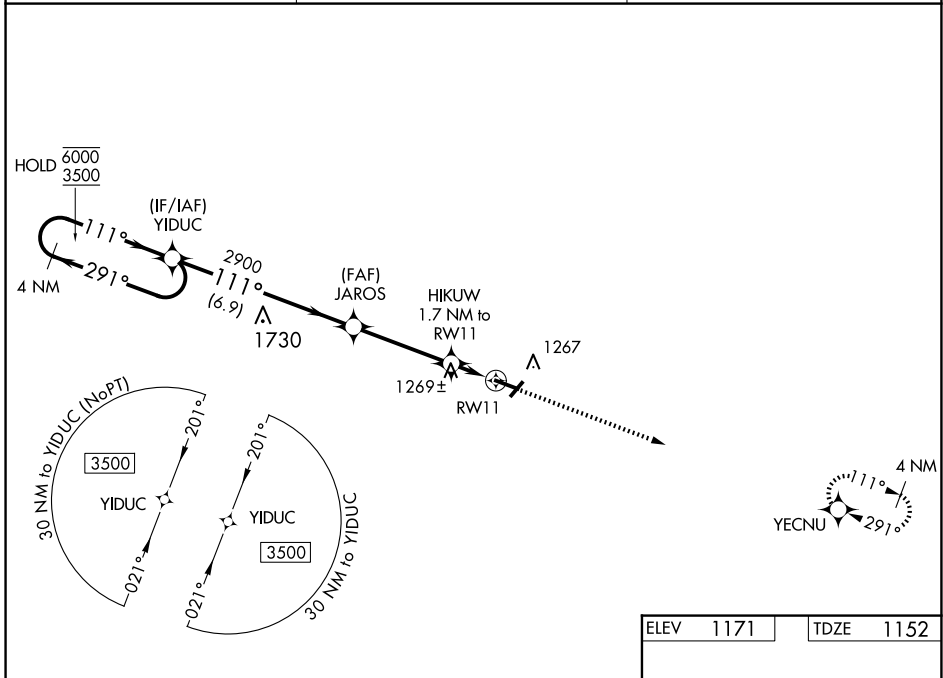
IOWA COUNTY (MRJ)

RNP APCH - GPS.

⚠ Baro-VNAV and VDP NA when using Platteville altimeter setting. For uncompensated Baro-VNAV systems, LNAV/VNAV NA below -17°C or above 54°C. When local altimeter setting not received, use Platteville altimeter setting and increase LPV and LNAV/VNAV DA to 1457 feet; increase all MDAs 60 feet and LNAV visibility Cat C ¼ SM.

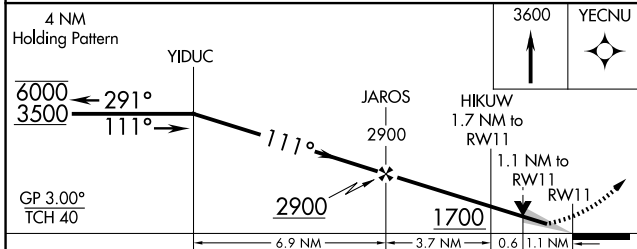
MISSED APPROACH:
Climb to 3600 direct YECNU and hold.

AWOS-3 118.525	CHICAGO CENTER 133.95 281.4	UNICOM 122.8 (CTAF) 0
--------------------------	---------------------------------------	---------------------------------

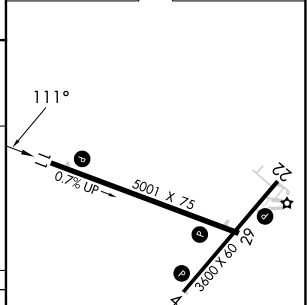


EC-3, 15 MAY 2025 to 12 JUN 2025

EC-3, 15 MAY 2025 to 12 JUN 2025



ELEV 1171	TDZE 1152
-----------	-----------



CATEGORY	A	B	C	D
LPV DA		1402-1 250 (300-1)		NA
LNAV/VNAV DA		1402-1 250 (300-1)		NA
LNAV MDA		1520-1 368 (400-1)		NA
CIRCLING	1620-1 449 (500-1)	1640-1 469 (500-1)	1640-1½ 469 (500-1½)	NA

MIRL Rwy 4-22 and 11-29 0