

APP CRS 184°	Rwy Idg TDZE Apt Elev	N/A N/A 1179
------------------------	-----------------------------	---

RNAV (GPS)-B

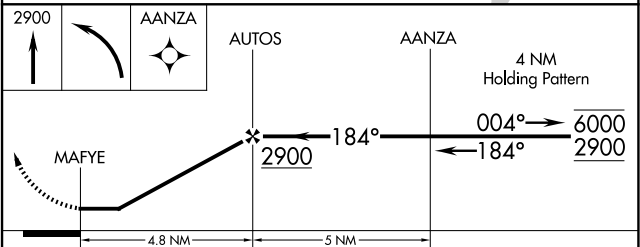
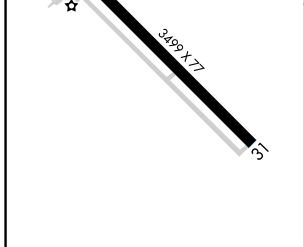
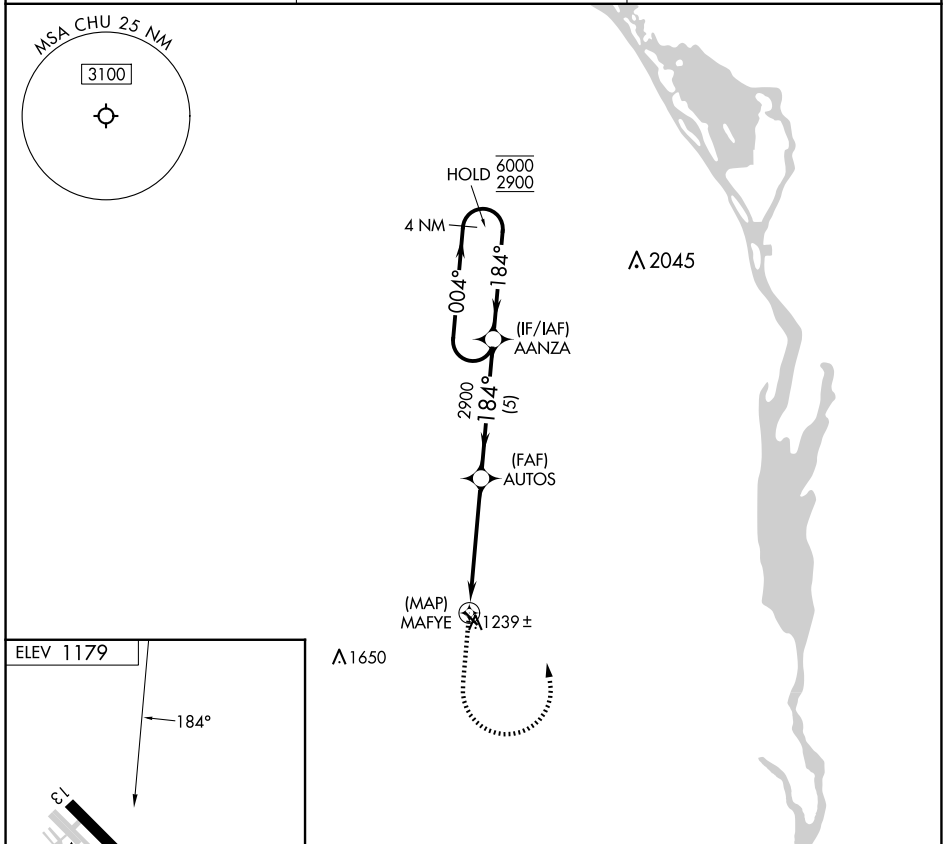
HOUSTON COUNTY (CHU)

RNP APCH - GPS.

NA Procedure NA at night. Rwy 13 and 31 helicopter visibility reduction below 1 SM NA. Use La Crosse Rgnl altimeter setting.

MISSED APPROACH: Climb to 2900 then left turn direct AANZA and hold.

LSE ASOS 124.95	MINNEAPOLIS CENTER 128.6 363.0	CTAF 122.9
---------------------------	--	----------------------



CATEGORY	A	B	C	D
CIRCLING	1820-1	641 (700-1)	NA	

NC-1, 15 MAY 2025 to 12 JUN 2025

NC-1, 15 MAY 2025 to 12 JUN 2025