

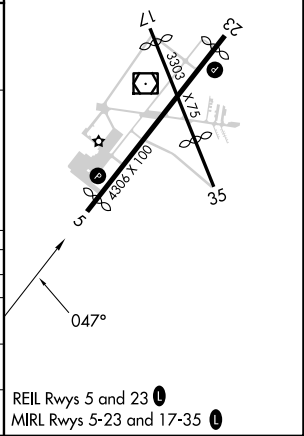
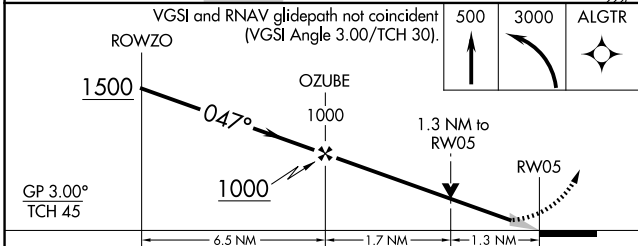
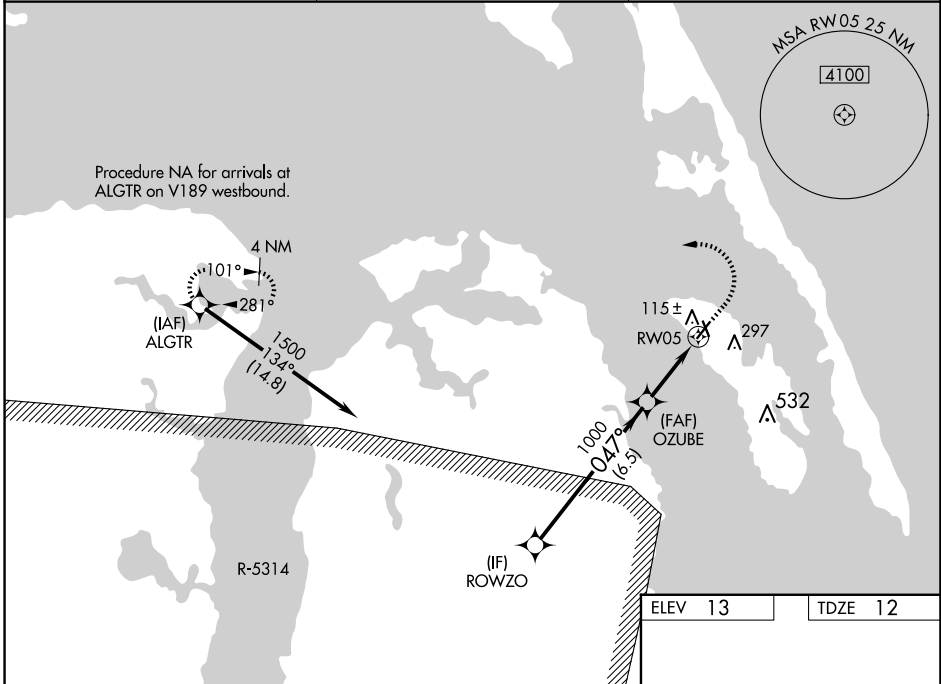
WAAS CH <b>72626</b> <b>W05A</b>	APP CRS <b>047°</b>	Rwy Idg TDZE <b>12</b> Apt Elev <b>13</b>	<b>4001</b>
--	------------------------	---	-------------

# RNAV (GPS) RWY 5

DARE COUNTY RGNL (MQI)

RNP APCH - GPS.		MISSED APPROACH: Climb to 500 then climbing left turn to 3000 direct ALGTR and hold.
Circling Rwy 17, 23, 35 NA at night. For uncompensated Baro-VNAV systems, LNAV/VNAV NA below -5°C or above 34°C.		

AWOS-3 <b>128.275</b>	CHERRY POINT APP CON <b>124.725 350.35</b>	UNICOM <b>122.8 (CTAF) 0</b>
--------------------------	---	---------------------------------



CATEGORY	A	B	C	D
LPV DA	262-3/4	250 (300-3/4)		NA
LNAV/VNAV DA	347-1	335 (400-1)		NA
LNAV MDA	460-1	448 (500-1)	460-1 3/8 448 (500-1 3/8)	NA
CIRCLING	600-1	587 (600-1)	600-1 1/2 587 (600-1 1/2)	NA

SE-2, 15 MAY 2025 to 12 JUN 2025

SE-2, 15 MAY 2025 to 12 JUN 2025