

WAAS CH 40335 W22A	APP CRS 220°	Rwy Idg 5000 TDZE 615 Apt Elev 615
--	------------------------	---

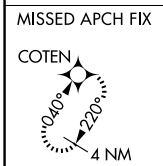
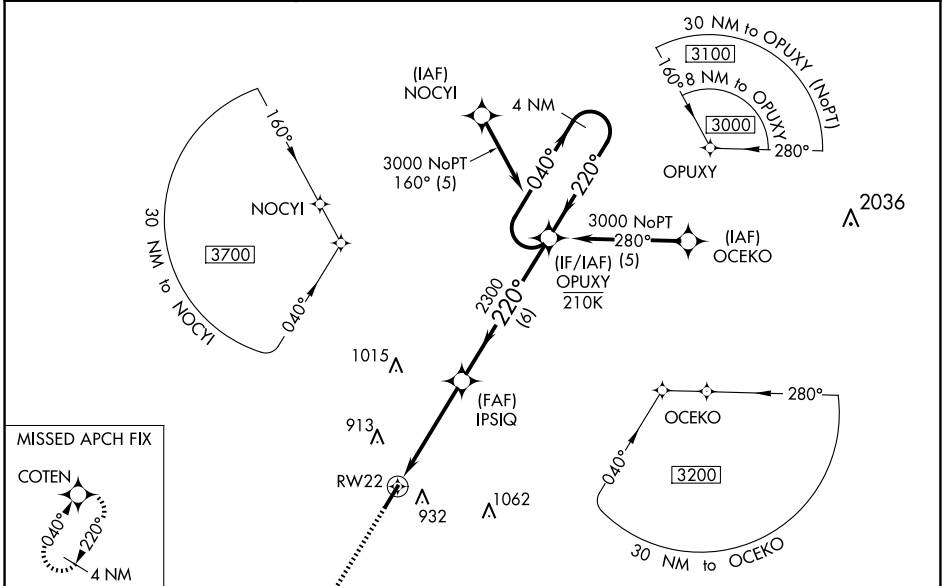
RNAV (GPS) RWY 22

SILER CITY MUNI (SCR)

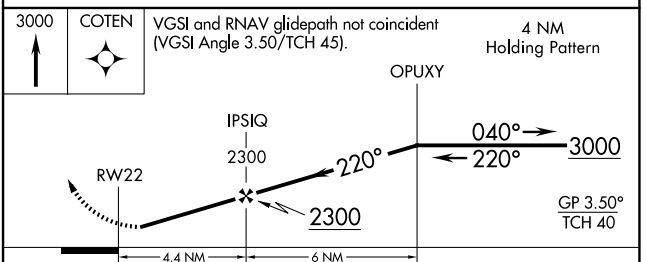
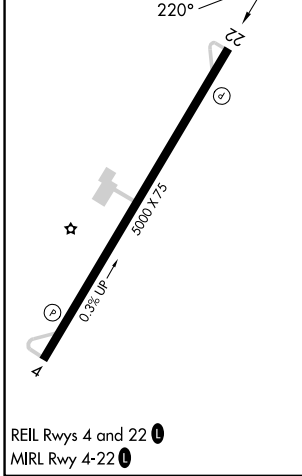
⚠ For uncompensated Baro-VNAV systems, LNAV/VNAV NA below -16°C (4°F) or above 54°C (130°F). DME/DME RNP-0.3 NA. Procedure NA at night. Baro-VNAV NA when using Asheboro altimeter setting. Rwy 4, 22 helicopter visibility reduction below 1 SM NA. When local altimeter setting not received, use Asheboro altimeter setting: increase all DA 53 feet and all MDA 60 feet; increase LPV all Cats, LNAV/VNAV all Cats, and LNAV Cat C visibilities 1/8 mile, increase Circling Cat C visibility 1/4 mile.

MISSED APPROACH:
Climb to 3000 direct COTEN and hold.

AWOS-3 125.775	GREENSBORO APP CON 126.6 327.075	UNICOM 122.7 (CTAF) 0
--------------------------	--	---------------------------------



ELEV 615	TDZE 615
----------	----------



CATEGORY	A	B	C	D
LPV DA	954-1 339 (400-1)			NA
LNAV/VNAV DA	1140-1 ⁵ / ₈ 525 (600-1 ⁵ / ₈)			NA
LNAV MDA	1160-1	545 (600-1)	1160-1 ⁵ / ₈ 545 (600-1 ⁵ / ₈)	NA
C CIRCLING	1240-1	625 (700-1)	1240-1 ³ / ₄ 625 (700-1 ³ / ₄)	NA

SE-2, 15 MAY 2025 to 12 JUN 2025

SE-2, 15 MAY 2025 to 12 JUN 2025