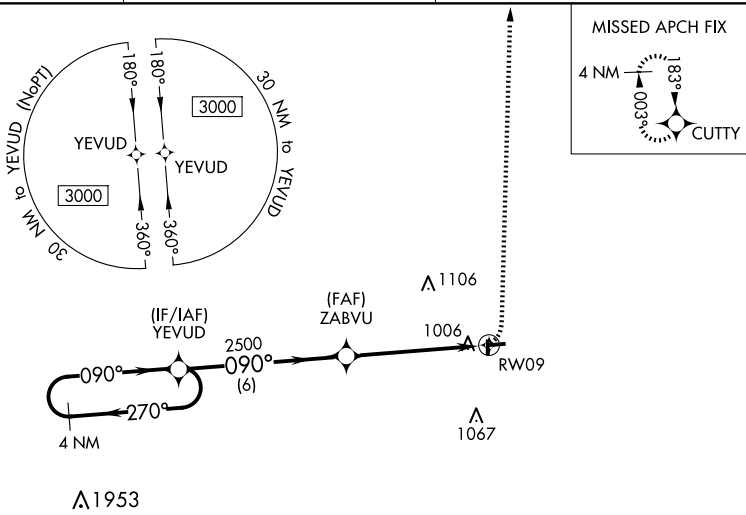


WAAS CH <b>58334</b> <b>W09A</b>	APP CRS <b>090°</b>	Rwy Idg <b>3200</b> TDZE <b>841</b> Apt Elev <b>841</b>
--	------------------------	---

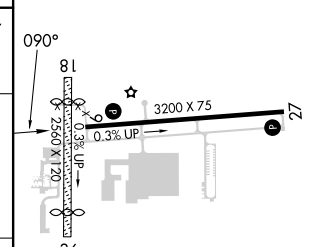
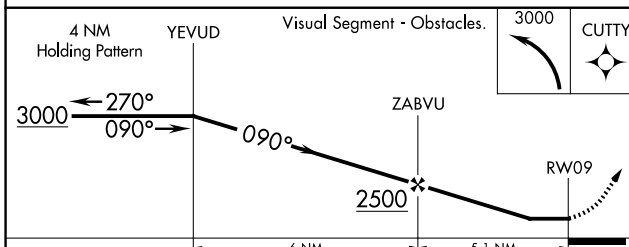
# RNAV (GPS) RWY 9

ABRAMS MUNI (4D0)

<p><b>⚠</b> NA</p> <p>Use Lansing altimeter setting. DME/DME RNP-0.3 NA. Circling NA to Rwy 18 and 36. Helicopter visibility reduction below <math>\frac{3}{4}</math> SM NA. Night Landing Rwy 27 NA.</p>	<p>MISSED APPROACH: Climbing left turn 3000 direct CUTTY and hold.</p>	
<p>LAN ASOS <b>119.75</b></p>	<p>GREAT LAKES APP CON ★ <b>118.65 226.4</b></p>	<p>UNICOM <b>122.7 (CTAF) 0</b></p>



ELEV <b>841</b>	TDZE <b>841</b>
-----------------	-----------------



CATEGORY	A	B	C	D
LP MDA	1380-1	539 (600-1)		NA
LNAV MDA	1400-1	559 (600-1)		NA
CIRCLING	1400-1 559 (600-1)	1420-1 579 (600-1)		NA

REIL Rwy 27 <b>0</b>	MIRL Rwy 9-27 <b>0</b>
----------------------	------------------------

EC-1, 15 MAY 2025 to 12 JUN 2025

EC-1, 15 MAY 2025 to 12 JUN 2025