

RIPLEY, MISSISSIPPI

AL-6339 (FAA)

21252

VORTAC HLI <b>112.4</b> Chan <b>71</b>	APP CRS <b>094°</b>	Rwy Idg TDZE Apt Elev <b>467</b>	<b>N/A</b> <b>N/A</b>
--	------------------------	---	--------------------------

**VOR/DME-A**  
RIPLEY (25M)

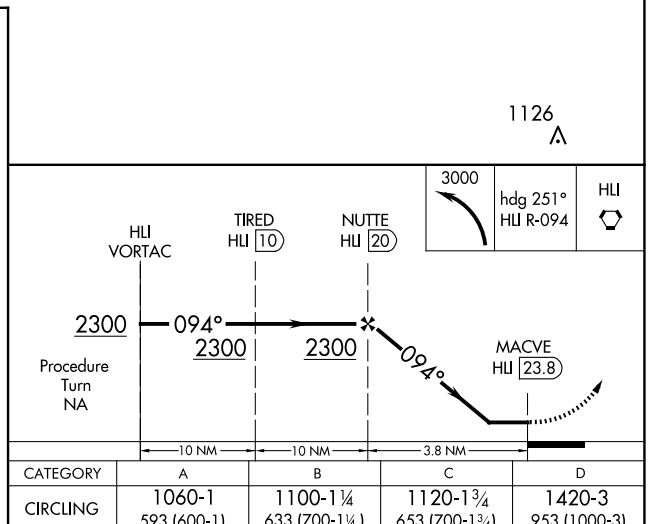
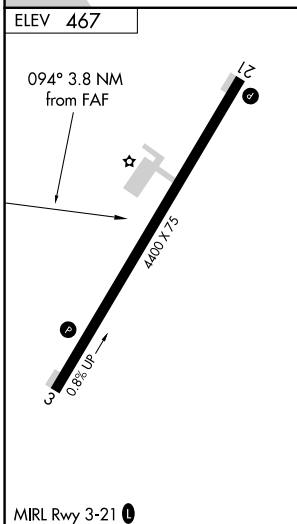
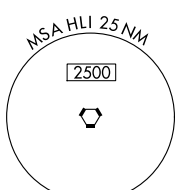
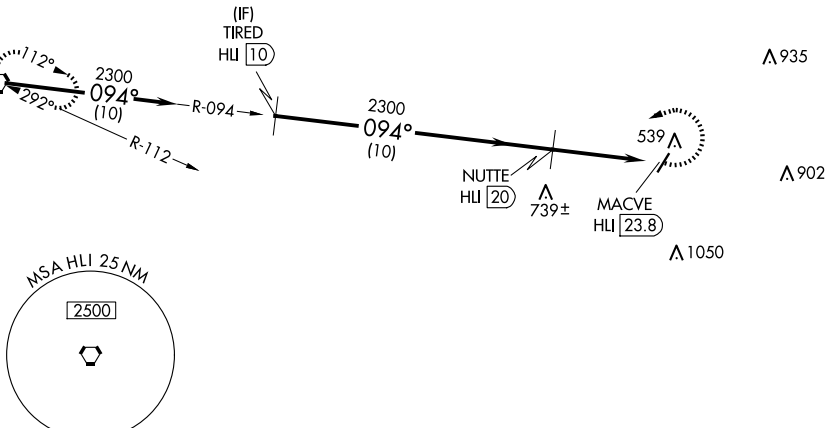
**NA** Use Corinth altimeter setting; when not received, use Tupelo altimeter setting and increase all MDAs 40 feet, and visibility Cat C ¼ SM.  
**NA** Procedure NA at night. Helicopter visibility reduction below 1 SM NA.

MISSED APPROACH: Climbing left turn to 3000 via heading 251° and HLI VORTAC R-094 to HLI VORTAC and hold.

CRX AWOS-3PT <b>118.675</b>	MEMPHIS CENTER <b>135.9 260.6</b>	UNICOM <b>122.8 (CTAF) 0</b>
--------------------------------	--------------------------------------	---------------------------------

Procedure NA for arrivals on HLI VORTAC  
 airway radials 045 CW 112.

IAF  
**HOLLY SPRINGS**  
 112.4 HLI [112.4]  
 Chan 71



SC-4, 15 MAY 2025 to 12 JUN 2025

SC-4, 15 MAY 2025 to 12 JUN 2025

RIPLEY, MISSISSIPPI  
 Amdt 2B 09SEP21

34°43'N-89°01'W

RIPLEY (25M)  
**VOR/DME-A**