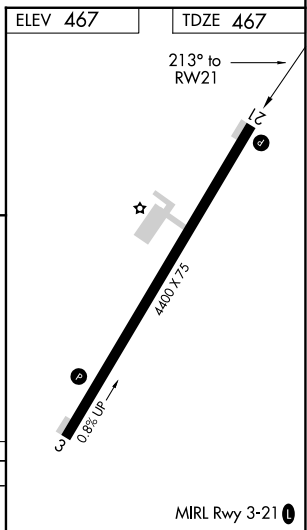
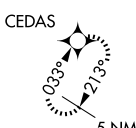
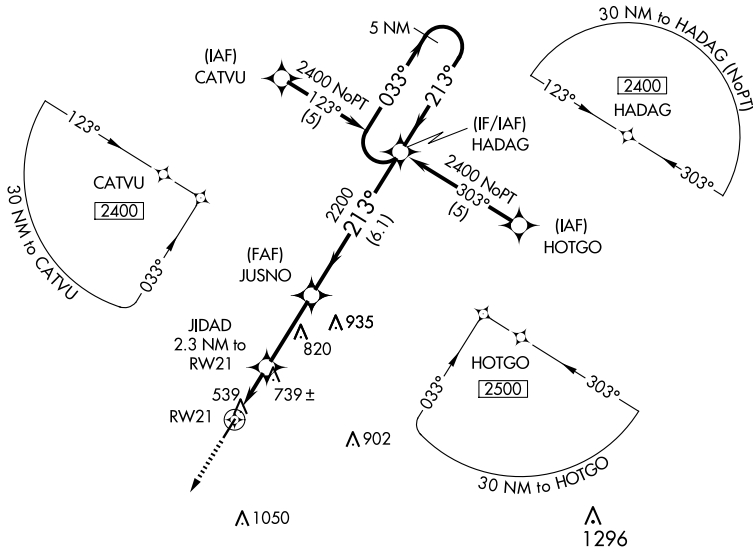


|             |                     |
|-------------|---------------------|
| APP CRS     | Rwy Idg <b>4400</b> |
| <b>213°</b> | TDZE <b>467</b>     |
|             | Apt Elev <b>467</b> |

# RNAV (GPS) RWY 21

RIPLEY (25M)

|  |                                      |   |
|--|--------------------------------------|---|
| RNP APCH.  |                                      | MISSED APPROACH: Climb to 2500 direct CEDAS and hold. |
| Use Corinth altimeter setting; when not received, use Tupelo altimeter setting and increase all MDA 40 feet, and increase LNAV Cat C visibility 1/4 mile. Procedure NA at night. Rwy 21 helicopter visibility reduction below 1 SM NA. |                                      |   |
| CRX AWOS-3PT<br><b>118.675</b>   | MEMPHIS CENTER<br><b>135.9 260.6</b> | UNICOM<br><b>122.8 (CTAF) 0</b>                       |



|          |        |  |                         |                      |
|----------|--------|--|-------------------------|----------------------|
| 2500     | CEDAS  | VGSI and descent angles not coincident. (VGSI Angle 3.50/TCH 16) |                         | 5 NM Holding Pattern |
| ↑        | ☆      | JIDAD 2.3 NM to RW21   | JUSNO                   | HADAG                |
| RW21     | 1220   | 2200   | 2400                    | 2400                 |
|          | 2.3 NM | 2.9 NM   | 6.1 NM                  |                      |
| CATEGORY | A      | B  | C                       | D                    |
| LNAV MDA | 1060-1 | 593 (600-1)  | 1060-1½<br>593 (600-1½) | NA                   |

SC-4, 15 MAY 2025 to 12 JUN 2025

SC-4, 15 MAY 2025 to 12 JUN 2025