

VORTAC GSO 116.2 Chan 109	APP CRS 018°	Rwy Idg TDZE Apt Elev	N/A N/A 694
---	------------------------	--------------------------	--

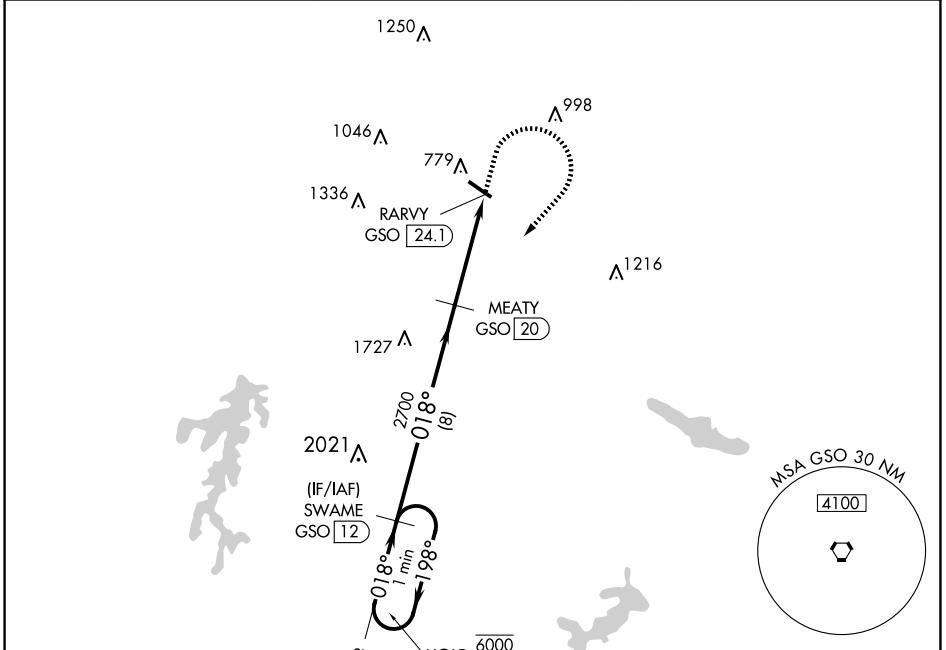
VOR-A

ROCKINGHAM COUNTY NC SHILOH (SIF')

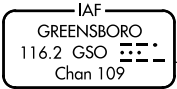
DME required.

MISSED APPROACH: Climb to 3100 then climbing right turn to 3100 on heading 225° and GSO VORTAC R-018 to SWAME/GSO 12 DME and hold.

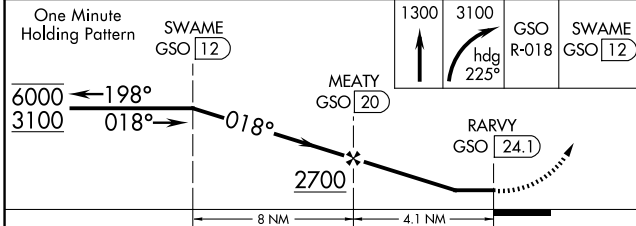
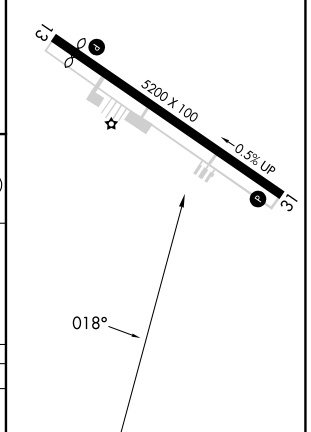
AWOS-3 119.775	GREENSBORO APP CON 124.35 269.225	UNICOM 122.8 (CTAF)
--------------------------	---	-------------------------------



Procedure NA for arrival on GSO VORTAC airway radials 337 CW 054.



ELEV 694
REIL Rwy 13 and 31
HIRL Rwy 13-31



CATEGORY	A	B	C	D
CIRCLING	1280-1 586 (600-1)	1340-1 646 (700-1)	1340-1¼ 646 (700-1¼)	1440-2½ 746 (800-2½)

SE-2, 15 MAY 2025 to 12 JUN 2025

SE-2, 15 MAY 2025 to 12 JUN 2025