

WAAS CH 50514 W20A	APP CRS 200°	Rwy Idg TDZE 969 Apt Elev 969
--	------------------------	---

RNAV (GPS) RWY 20

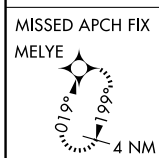
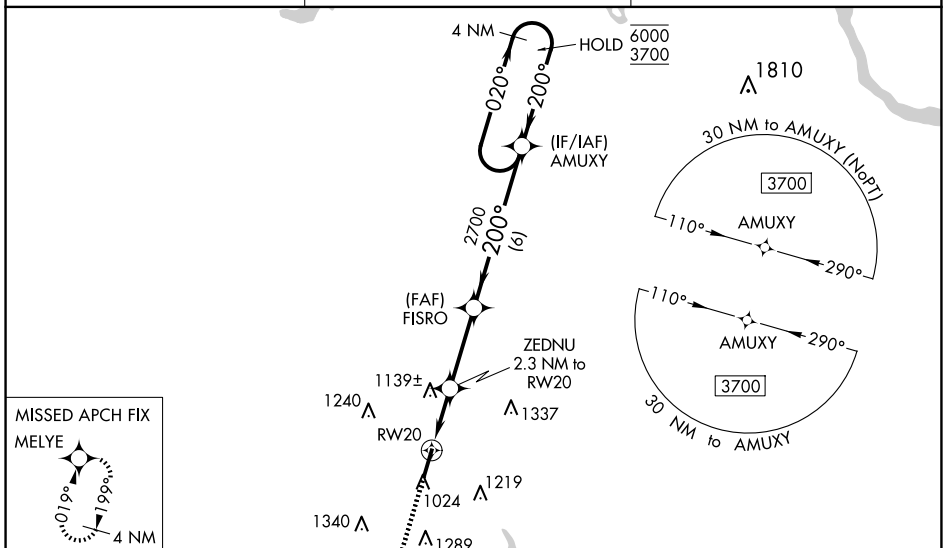
CULLMAN RGNL/FOLSOM FLD (CMD)

RNP APCH - GPS.

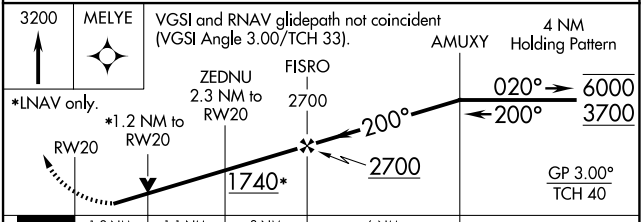
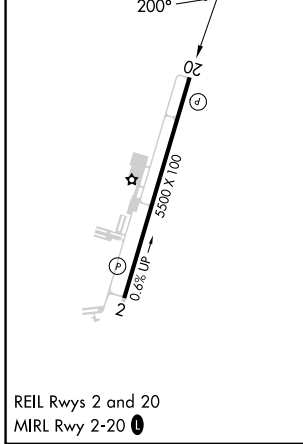
⚠ Circling Rwy 2 NA at night. Baro-VNAV and VDP NA when using Huntsville Intl-Carl T Jones Fld altimeter setting. Rwy 20 helicopter visibility reduction below 3/4 SM NA. For uncompensated Baro-VNAV systems, LNAV/VNAV NA below -16°C or above 54°C. When local altimeter setting not received, use Huntsville Intl-Carl T Jones Fld altimeter setting and increase LPV DA to 1320 feet, LNAV/VNAV DA to 1479 feet, and increase all MDA 120 feet; increase LPV all Cats visibility 1/4 SM, LNAV/VNAV all Cats visibility 1/4 SM, LNAV Cat C, D visibility 3/8 SM and Circling Cat C 1/2 SM, Cat D 1/4 SM.

MISSED APPROACH:
Climb to 3200 direct MELYE and hold.

AWOS-3PT 124.175	HUNTSVILLE APP CON* 118.05 239.0	UNICOM 122.8 (CTAF) 0
----------------------------	--	---------------------------------



ELEV 969	TDZE 969
-----------------	-----------------



CATEGORY	A	B	C	D
LPV DA		1219-3/4	250 (300-3/4)	
LNAV/VNAV DA		1378-1 1/8	409 (500-1 1/8)	
LNAV MDA	1400-1	431 (500-1)	1400-1 1/4	431 (500-1 1/4)
C CIRCLING	1420-1 451 (500-1)	1500-1 531 (600-1)	1600-1 3/4 631 (700-1 3/4)	1640-2 1/4 671 (700-2 1/4)

SE-4, 15 MAY 2025 to 12 JUN 2025

SE-4, 15 MAY 2025 to 12 JUN 2025