

WAAS CH 58235 W02A	APP CRS 020°	Rwy Idg TDZE Apt Elev	5500 957 969
----------------------------------------	------------------------	-----------------------------	-----------------------------------------

RNAV (GPS) RWY 2

CULLMAN RGNL/FOLSOM FLD (CMD)

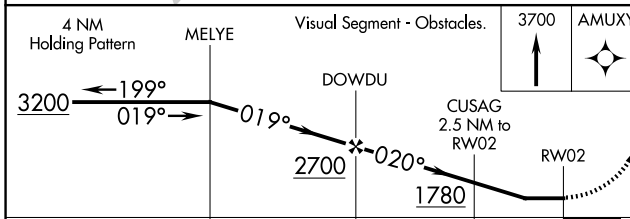
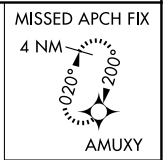
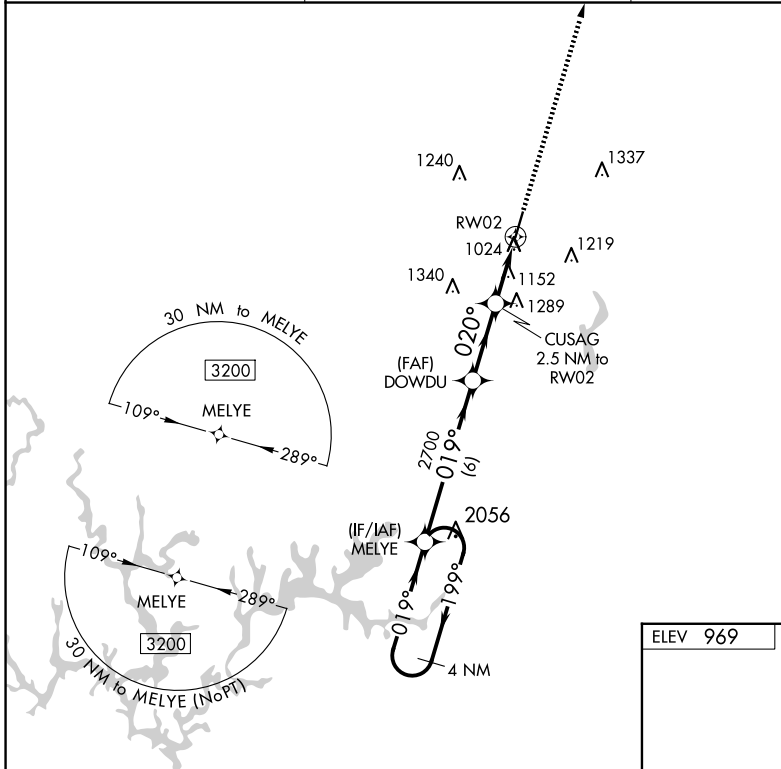
⚠ DME/DME RNP-0.3 NA. When local altimeter setting not received, use Huntsville Int-Carl T Jones Fld altimeter setting and increase all MDA 100 feet, and increase LP, LNAV Cat C and D visibility $\frac{3}{8}$ SM, increase Circling Cat C and D visibility $\frac{1}{4}$ SM. Rwy 2 helicopter visibility reduction below 1 SM NA. Straight-in and Circling Rwy 2 NA at night.

MISSED APPROACH:
Climb to 3700 direct AMUXY and hold.

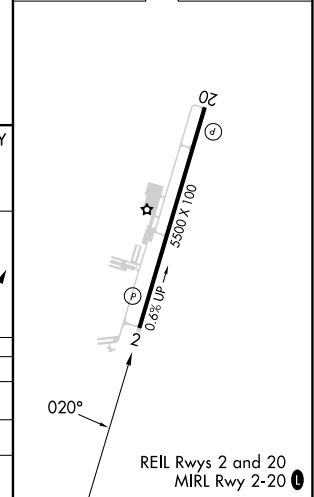
AWOS-3PT
124.175

HUNTSVILLE APP CON★
118.05 239.0

UNICOM
122.8 (CTAF) 0



ELEV 969	TDZE 957
----------	----------



CATEGORY	A	B	C	D
LP MDA	1420-1 463 (500-1)		1420-1 $\frac{3}{8}$ 463 (500-1 $\frac{3}{8}$)	
LNAV MDA	1440-1 483 (500-1)		1440-1 $\frac{3}{8}$ 483 (500-1 $\frac{3}{8}$)	
C CIRCLING	1440-1 471 (500-1)	1500-1 531 (600-1)	1600-1 $\frac{3}{4}$ 631 (700-1 $\frac{3}{4}$)	1640-2 $\frac{1}{4}$ 671 (700-2 $\frac{1}{4}$)

SE-4, 15 MAY 2025 to 12 JUN 2025

SE-4, 15 MAY 2025 to 12 JUN 2025