

WAAS CH 90216 W27A	APP CRS 274°	Rwy Idg 5390 TDZE 552 Apt Elev 569
--	------------------------	---

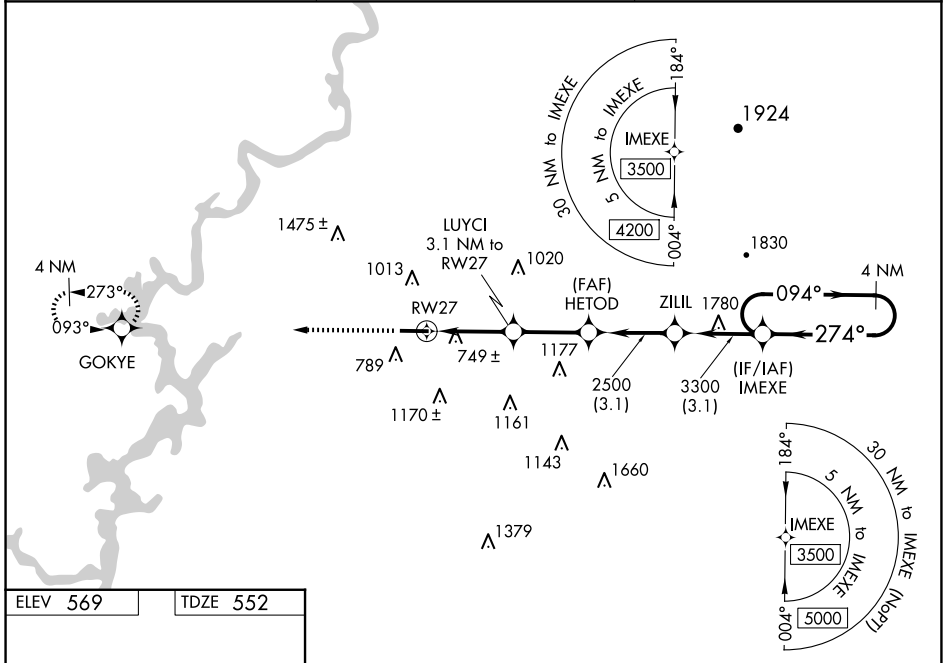
RNAV (GPS) RWY 27

MERKEL FLD SYLACAUGA MUNI (SCD)

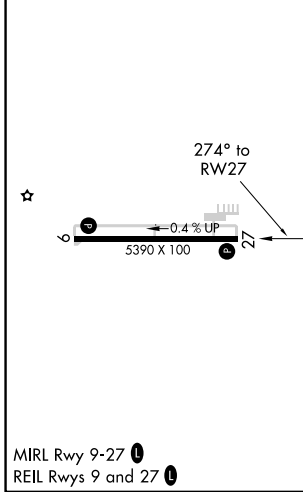
▼ For uncompensated Baro-VNAV systems, LNAV/VNAV NA below -1.6°C (4°F) or above 48°C (118°F). Baro-VNAV and VDP NA when using Birmingham altimeter setting.
 ▲ DME/DME RNP-0.3 NA. When local altimeter setting not received, use Birmingham altimeter setting and increase LPV DA to 889 feet, LNAV/VNAV DA to 1161 feet, and all visibilities 3/8 mile. Increase all MDA 100 feet and LNAV Cat C and D visibilities 1/4 mile.

MISSED APPROACH:
 Climb to 3200 direct
 GOKYE and hold.

AWOS-3PT 119.125	BIRMINGHAM APP CON 123.8 256.8	UNICOM 122.8 (CTAF) 0
----------------------------	--	---------------------------------



ELEV 569	TDZE 552
----------	----------



3200	GOKYE	VGSI and RNAV glidepath not coincident (VGSI Angle 3.00/TCH 40).		4 NM Holding Pattern	
*LNAV only.		LUYCI 3.1 NM to RW27	HETOD 2500	ZILIL 3300	IMEXE 3500
RW27		*1.3 NM to RW27	*1600	2500	GP 3.10° TCH 48
1.3 NM		1.8 NM	2.7 NM	3.1 NM	3.1 NM
CATEGORY	A	B	C	D	
LPV DA	802-3/4		250 (300-3/4)		
LNAV/VNAV DA	1074-13/4		522 (600-13/4)		
LNAV MDA	1000-1 448 (500-1)		1000-13/8 448 (500-13/8)		
<input checked="" type="checkbox"/> CIRCLING	1140-1 571 (600-1)	1400-11/4 831 (900-11/4)	1620-3 1051 (1100-3)	1700-3 1131 (1200-3)	

SYLACAUGA, ALABAMA
 Amdt 2 15SEP16

33°10'N-86°18'W

MERKEL FLD SYLACAUGA MUNI (SCD)
RNAV (GPS) RWY 27

SE-4, 15 MAY 2025 to 12 JUN 2025

SE-4, 15 MAY 2025 to 12 JUN 2025