

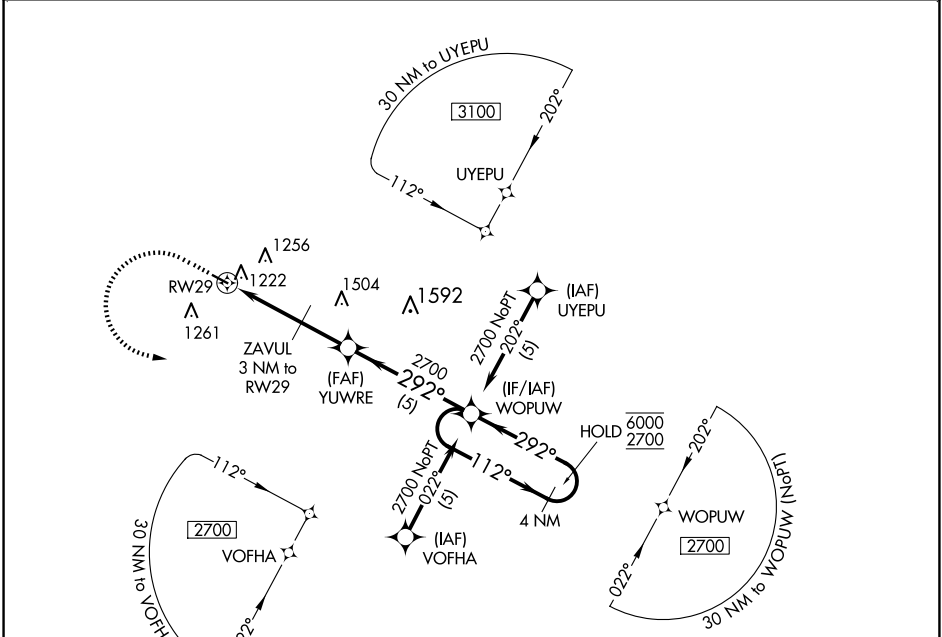
APP CRS 292°	Rwy Idg 3498
	TDZE 1076
	Apt Elev 1076

RNAV (GPS) RWY 29

OLIVIA RGNL (OVL)

RNP APCH - GPS.	MISSED APPROACH: Climb to 2000 then climbing left turn to 2700 direct WOPUW and hold.
Rwy 29 helicopter visibility reduction below 1 SM NA.	
Procedure NA at night.	

AWOS-3 119.275	MINNEAPOLIS CENTER 127.1 290.2	UNICOM 122.8 (CTAF)
--------------------------	--	-------------------------------



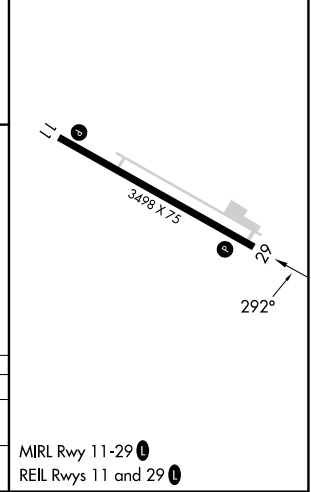
NC-1, 15 MAY 2025 to 12 JUN 2025

NC-1, 15 MAY 2025 to 12 JUN 2025

ELEV 1076	TDZE 1076
-----------	-----------



			VGSI and descent angles not coincident (VGSI Angle 3.00/TCH 25)
			YUWRE WOPUW 4 NM Holding Pattern
	ZAVUL $\leq 3.03^\circ$ 3 NM to RW29 TCH 45		



CATEGORY	A	B	C	D
LNVA MDA	1580-1 504 (600-1)		1580-1 $\frac{3}{8}$ 504 (600-1 $\frac{3}{8}$)	
CIRCLING	1620-1 544 (600-1)		1720-1 $\frac{3}{4}$ 644 (700-1 $\frac{3}{4}$)	1720-2 644 (700-2)