

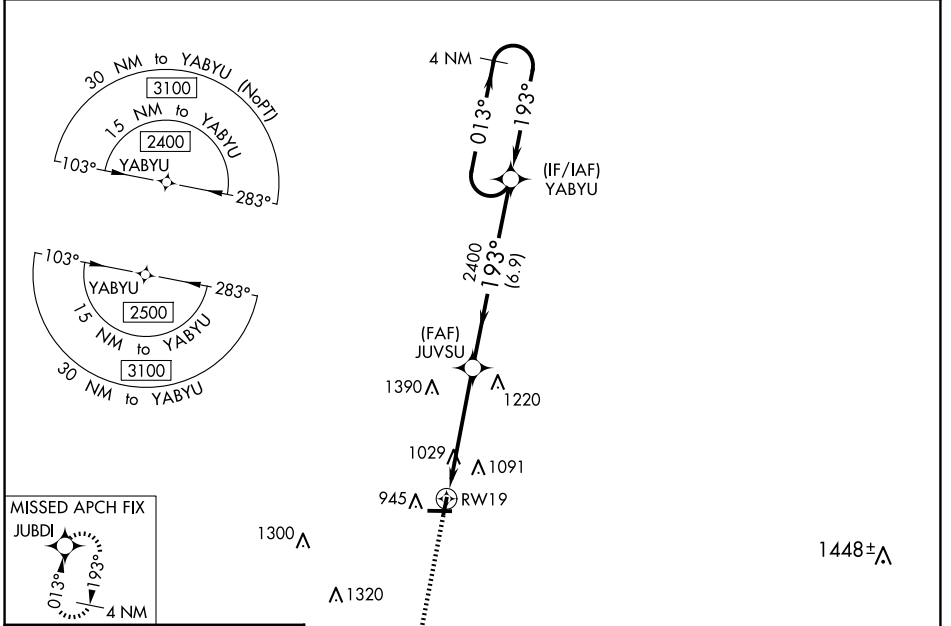
WAAS CH 97533 W19A	APP CRS 193°	Rwy Idg TDZE Apt Elev	3200 857 858
--	------------------------	-----------------------------	---

RNAV (GPS) RWY 19

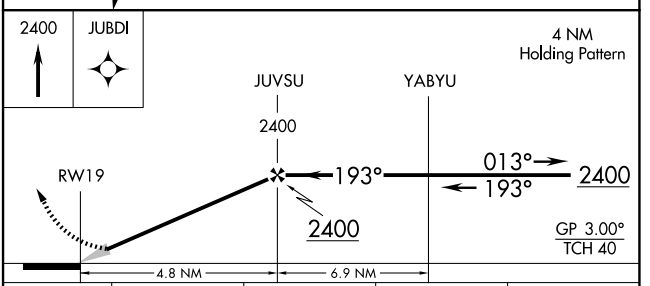
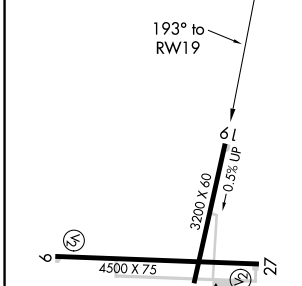
KEWANEE MUNI (EZI)

RNP APCH - GPS.	<p>Baro-VNAV NA. Use Galesburg altimeter setting. When local altimeter setting not received, use Moline altimeter setting and increase LPV DA to 1212 feet; increase LNAV/VNAV DA to 1446 feet and all visibilities $\frac{1}{8}$ SM. Increase all MDAs 40 feet and LNAV visibility Cat C $\frac{1}{8}$ SM, and Circling visibility Cat C $\frac{1}{4}$.</p>	MISSED APPROACH: Climb to 2400 direct JUBDI and hold.
-----------------	---	--

QUAD CITY APP CON ★ 133.275 257.8	UNICOM 122.8 (CTAF) 0
---	---------------------------------



ELEV 858	TDZE 857
-----------------	-----------------



CATEGORY	A	B	C	D
LPV DA	1182-1 325 (400-1)			NA
LNAV/VNAV DA	1416-1 $\frac{5}{8}$ 559 (600-1 $\frac{5}{8}$)			NA
LNAV MDA	1400-1	543 (600-1)	1400-1 $\frac{5}{8}$ 543 (600-1 $\frac{5}{8}$)	NA
<input checked="" type="checkbox"/> CIRCLING	1400-1 542 (600-1)	1520-1 662 (700-1)	1520-1 $\frac{3}{4}$ 662 (700-1 $\frac{3}{4}$)	NA

EC-3, 15 MAY 2025 to 12 JUN 2025

EC-3, 15 MAY 2025 to 12 JUN 2025