

APP CRS	Rwy Idg	3795
097°	TDZE	881
	Apt Elev	895

RNAV (GPS) RWY 10

MARLETTE TOWNSHIP (77G)

RNP APCH - GPS.

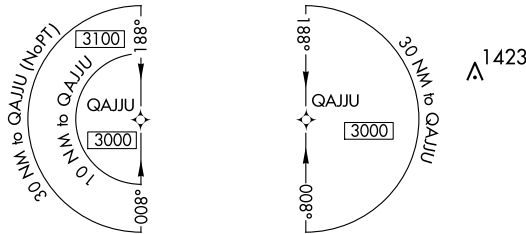
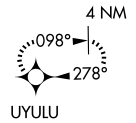
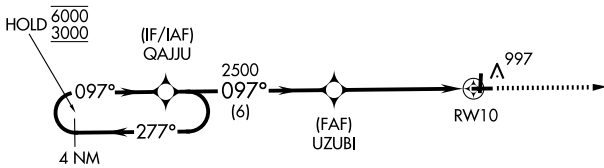
▽ Rwy 10 helicopter visibility reduction below 1 SM NA. Straight-in Rwy 10 NA at night, Circling Rwy 10, 19 NA at night. Use Caro altimeter setting, when not received, use Bad Axe altimeter setting and increase all MDAs 20 feet and LNAV visibility Cat C/D 1/2 SM.

MISSED APPROACH:
Climb to 2700 direct UYULU and hold.

CFS AWOS-3
119.275

CLEVELAND CENTER
127.7 290.425

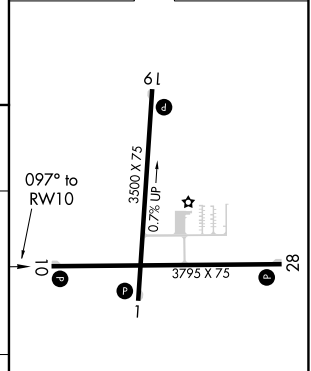
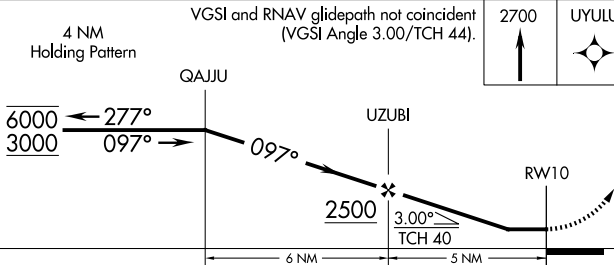
UNICOM
122.8 (CTAF) 0



EC-1, 15 MAY 2025 to 12 JUN 2025

EC-1, 15 MAY 2025 to 12 JUN 2025

ELEV 895	TDZE 881
----------	----------



CATEGORY	A	B	C	D
LNAV MDA	1420-1	539 (600-1)	1420-1½	539 (600-1½)
C CIRCLING	1460-1	565 (600-1)	1460-1½	1560-2
			565 (600-1½)	665 (700-2)

MIRL Rwy 1-19 and 10-28 **0**