

APP CRS **087°**
 Rwy Idg **3002**
 TDZE **146**
 Apt Elev **146**

RNAV (GPS) RWY 9

DAVID G JOYCE (ØR5)

RNP APCH - GPS.

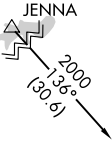
⚠ Procedure NA at night. Rwy 9 helicopter visibility reduction below 1 SM NA. Use Alexandria Intl altimeter setting, when not received use Esler Rgnl altimeter setting.

MISSED APPROACH: Climb to 2000 direct XVOVOY and hold.

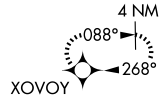
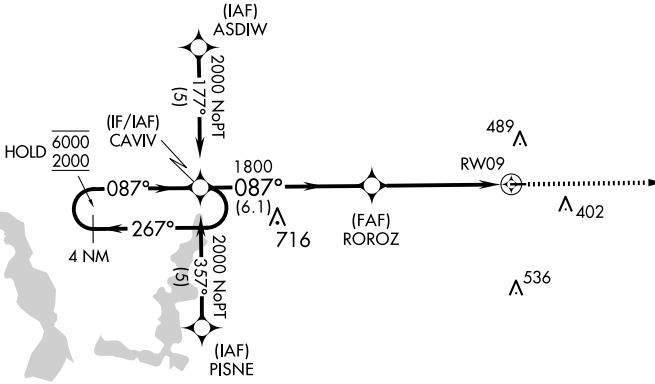
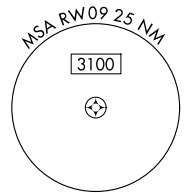
AEX ASOS
123.975

POLK APP CON
125.4 302.2

UNICOM
122.7 (CTAF) 0

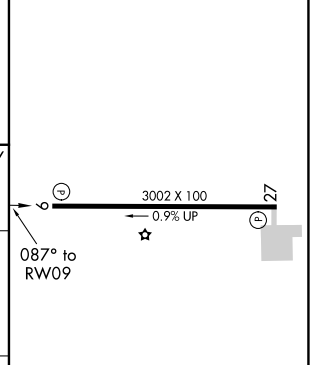
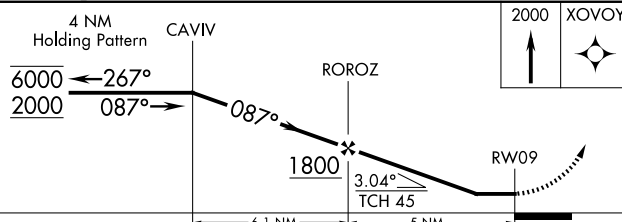


Procedure NA for arrivals at JENNA on V94 westbound.



Procedure NA for arrivals at NUBOY on V114-566 southeast bound.

ELEV **146** TDZE **146**



| CATEGORY | A | B | C | D |
|-------------------|----------------------|----------------------|---|----|
| LNAV MDA | 780-1 | 634 (700-1) | | NA |
| C CIRCLING | 780-1 634 (700-1) | 900-1 754 (800-1) | | NA |

MIRL Rwy 9-27 **0**
 REIL Rwy 9 and 27 **0**

SC-4, 15 MAY 2025 to 12 JUN 2025

SC-4, 15 MAY 2025 to 12 JUN 2025