

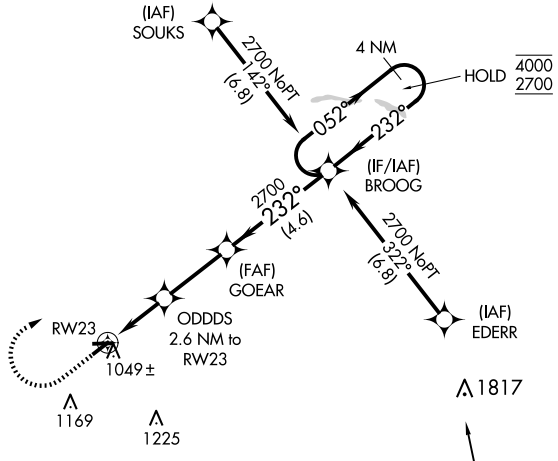
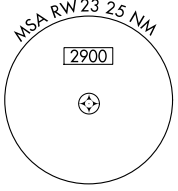
APP CRS	Rwy Idg	3760
232°	TDZE	932
	Apt Elev	936

RNAV (GPS) RWY 23

SHERIDAN (5I4)

RNP APCH - GPS.	MISSED APPROACH: Climb to 1800 then climbing right turn to 2700 direct BROOG and hold.
NA Circling NA to Rwy 9 and 27. Procedure NA at night. Rwy 23 helicopter visibility reduction below 1 SM NA. Use Indianapolis Exec altimeter setting.	

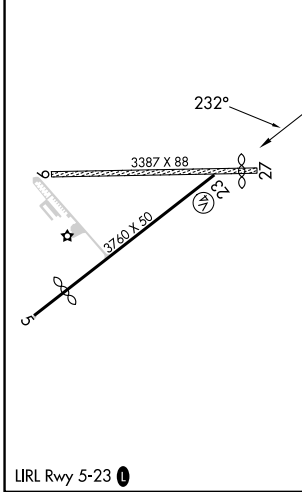
TYQ AWOS-3PT 120.725	INDIANAPOLIS APP CON 124.65 317.8	UNICOM 123.075 (CTAF)
--------------------------------	---	---------------------------------



EC-2, 15 MAY 2025 to 12 JUN 2025

EC-2, 15 MAY 2025 to 12 JUN 2025

ELEV 936	TDZE 932
----------	----------



SHERIDAN, INDIANA
Amdt 1 19MAY22

Procedure NA for arrivals at CLANG on V14-192-210 southwest bound.

1800	2700	BROOG	4 NM Holding Pattern	
↑	↷	✧		
ODDDS 2.6 NM to RWY 23		GOEAR	BROOG	
↷	↷	↷	↷	
1800	2700	4000	2700	
↷	↷	↷	↷	
2.6 NM	2.8 NM	4.6 NM		
CATEGORY	A	B	C	D
LNAV MDA	1340-1	408 (500-1)	1340-1½ 408 (500-1½)	NA
C CIRCLING	1400-1 464 (500-1)	1420-1 484 (500-1)	1500-1½ 564 (600-1½)	NA

40°11'N-86°13'W

RNAV (GPS) RWY 23

SHERIDAN (5I4)