

VORTAC BDF <b>114.7</b> Chan <b>94</b>	APP CRS <b>133°</b>	Rwy Idg <b>4003</b> TDZE <b>564</b> Apt Elev <b>585</b>
--	------------------------	---

# VOR RWY 13

MARSHALL COUNTY (C75)

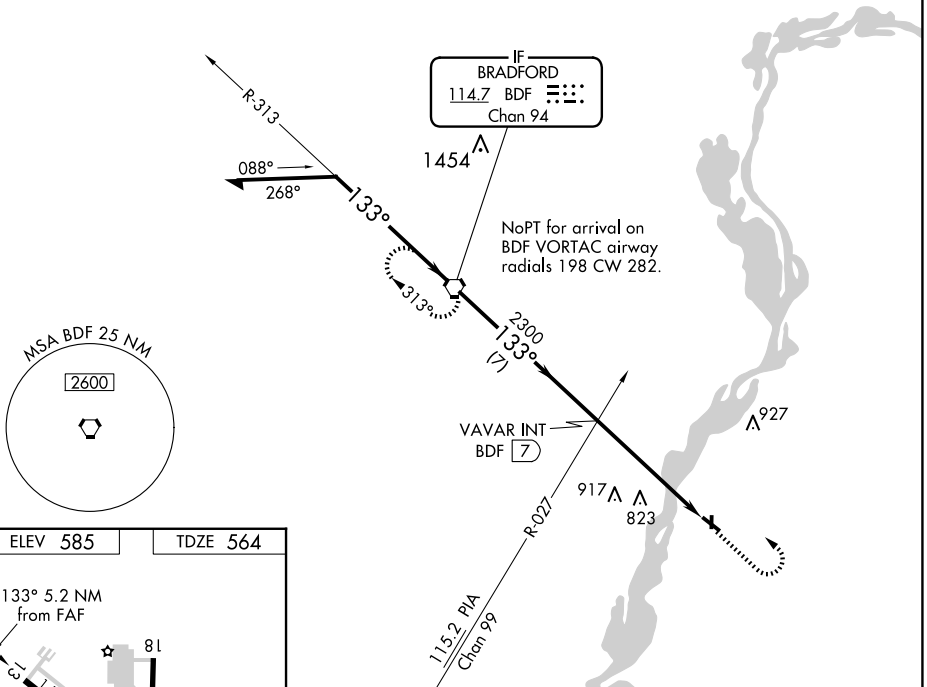
**⚠** Circling to Rwy 31, 36 NA at night.  
**⚠** Rwy 13 helicopter visibility reduction below ¾ SM NA.

MISSED APPROACH: Climb to 1500, then climbing left turn to 2500 direct BDF VORTAC and hold.

AWOS-3  
**119.425**

CHICAGO CENTER  
**124.55 307.125**

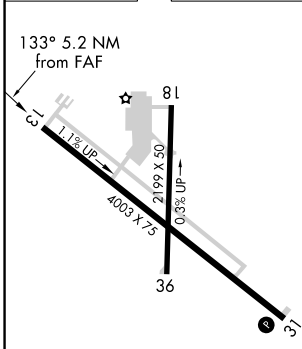
UNICOM  
**122.8 (CTAF) 0**



EC-3, 15 MAY 2025 to 12 JUN 2025

EC-3, 15 MAY 2025 to 12 JUN 2025

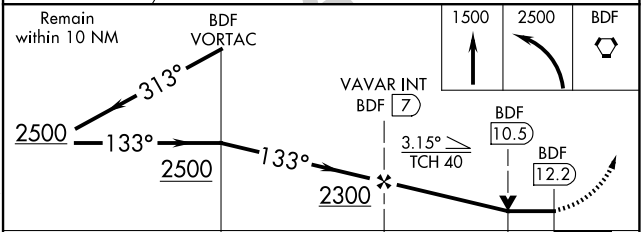
ELEV 585	TDZE 564
----------	----------



REIL Rwy 13 **0**  
 MIRL Rwy 13-31 **0**  
 LIRL Rwy 18-36

FAF to MAP 5.2 NM

Knots	60	90	120	150	180
Min:Sec	5:12	3:28	2:36	2:05	1:44



CATEGORY	A	B	C	D
S-13	1140-1	576 (600-1)	1140-1½ 576 (600-1½)	NA
CIRCLING	1140-1	555 (600-1)	1200-1¾ 615 (700-1¾)	NA