

(YAWNY.YAWNY1) 25107

# YAWNY ONE ARRIVAL (RNAV)

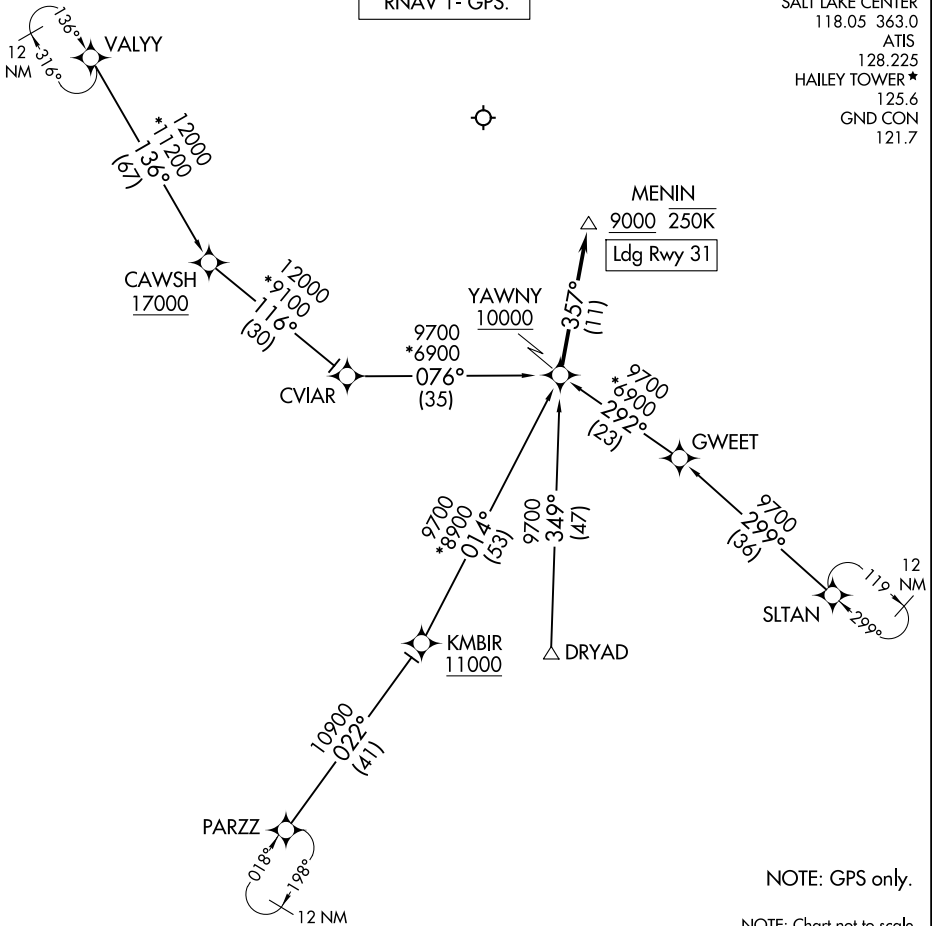
AL-6239 (FAA)

FRIEDMAN MEML (SUN)

HAILEY, IDAHO

RNAV 1 - GPS.

SALT LAKE CENTER  
118.05 363.0  
ATIS  
128.225  
HAILEY TOWER \*  
125.6  
GND CON  
121.7



NOTE: GPS only.

NOTE: Chart not to scale.

## ARRIVAL ROUTE DESCRIPTION

CVIAR TRANSITION (CVIAR.YAWNY1)

DRYAD TRANSITION (DRYAD.YAWNY1)

GWEET TRANSITION (GWEET.YAWNY1)

PARZZ TRANSITION (PARZZ.YAWNY1)

SLTAN TRANSITION (SLTAN.YAWNY1)

VALYY TRANSITION (VALYY.YAWNY1)

LANDING RUNWAY 31: From YAWNY on track 357° to cross MENIN at or above 9000 and at or below 250K. Expect RNAV Rwy 31 approach.

LOST COMMUNICATIONS: After MENIN, conduct RNAV (GPS) X RWY 31 or RNAV (GPS) Y RWY 31 approach.

# YAWNY ONE ARRIVAL (RNAV)

(YAWNY.YAWNY1) 17APR25

HAILEY, IDAHO  
FRIEDMAN MEML (SUN)

NW-1, 15 MAY 2025 to 12 JUN 2025

NW-1, 15 MAY 2025 to 12 JUN 2025