

APP CRS	Rwy Idg	3558
229°	TDZE	896
	Apt Elev	896

RNAV (GPS) RWY 23

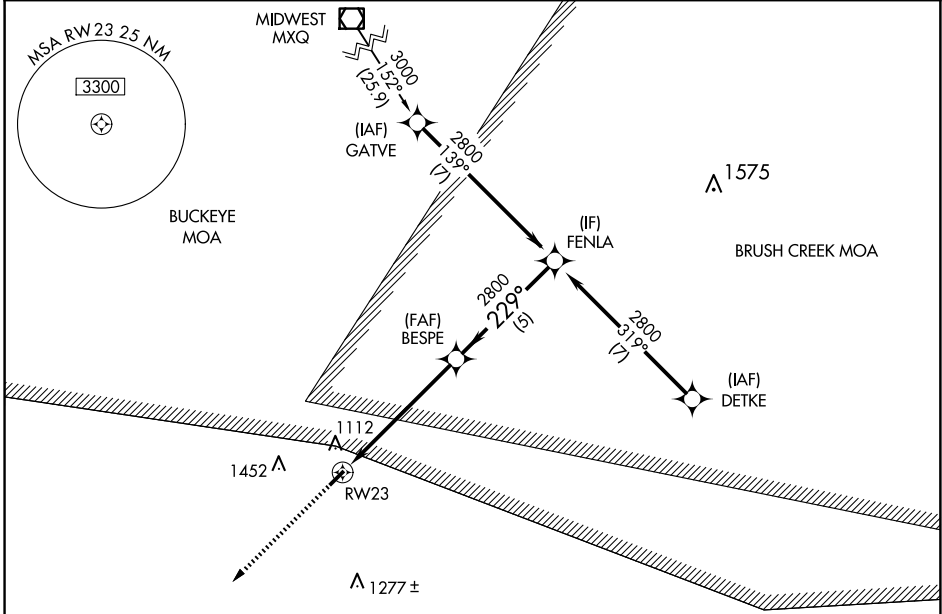
ALEXANDER SALAMON (A.M.T.)

RNP APCH - GPS.

- Procedure NA at night. Rwy 23 helicopter visibility reduction below 1 SM NA.
- NA Use Flemingsburg, Kentucky altimeter setting.

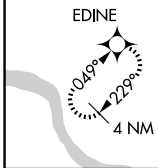
MISSED APPROACH: Climb to 2800 direct EDINE and hold.

FGX AWOS-3 118.125	INDIANAPOLIS CENTER 135.575 290.5	UNICOM 122.8 (CTAF) 0
------------------------------	---	---------------------------------



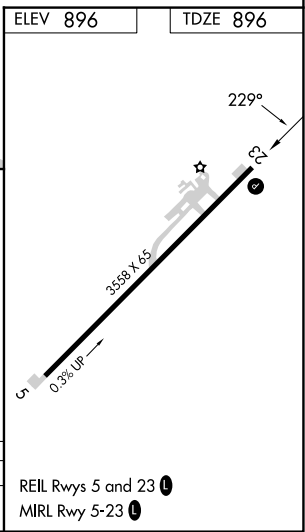
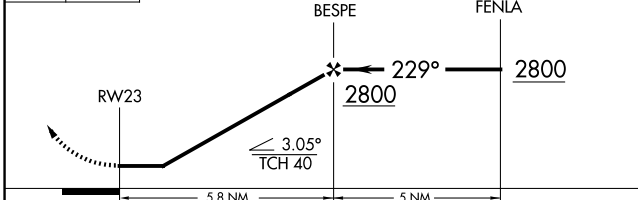
EC-2, 15 MAY 2025 to 12 JUN 2025

EC-2, 15 MAY 2025 to 12 JUN 2025



2800 EDINE

VGSI and descent angles not coincident (VGSI Angle 3.30/TCH 25).



CATEGORY	A	B	C	D
LNAV MDA	1460-1	564 (600-1)	1460-1½ 564 (600-1½)	NA

REIL Rwy 5 and 23 0

MIRL Rwy 5-23 0