

WAAS CH <b>93936</b> <b>W16A</b>	APP CRS <b>160°</b>	Rwy Idg TDZE Apt Elev	<b>5000</b> <b>1257</b> <b>1266</b>
--	------------------------	-----------------------------	---

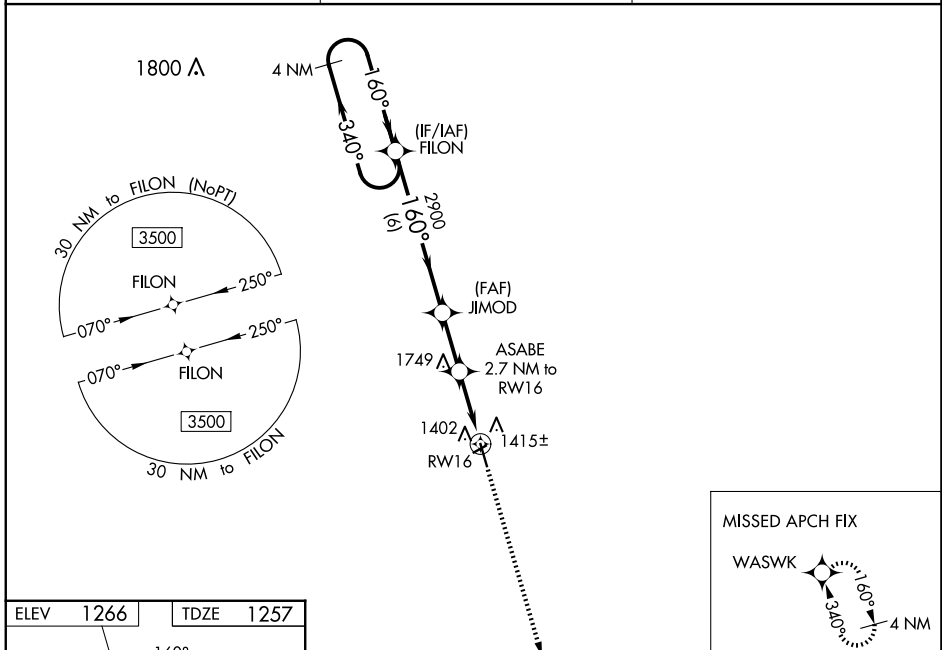
# RNAV (GPS) RWY 16

GWINNER/ROGER MELROE FLD (GWR)

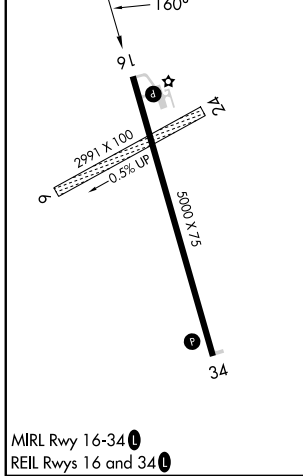
**⚠** For uncompensated Baro-VNAV systems, LNAV/VNAV NA below -17°C (2°F) or above 47°C (117°F). DME/DME RNP-0.3 NA. Circling NA to Rwy's 6 and 24. Baro-VNAV and VDP NA when using Fargo altimeter setting. When local altimeter setting not received, use Fargo altimeter setting: increase LPV DA to 1683 feet and visibility ¾ SM, and LNAV/VNAV DA to 1803 feet and visibility ¾ SM; increase all MDAs 180 feet and visibility LNAV Cat C/D ¾ SM, and Circling Cat C ¾ SM, and Circling Cat D ½ SM.

**MISSED APPROACH:**  
Climb to 3500 direct WASWK and hold.

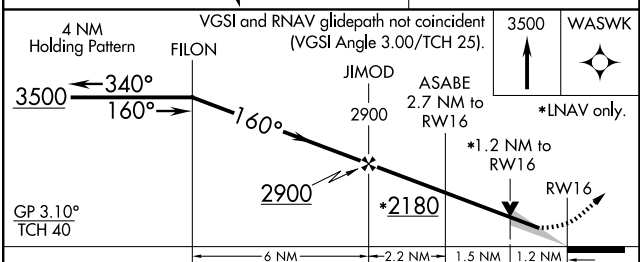
AWOS-3 <b>118.325</b>	MINNEAPOLIS CENTER <b>127.35 278.3</b>	UNICOM <b>122.7 (CTAF) 0</b>
--------------------------	---	---------------------------------



ELEV 1266	TDZE 1257
-----------	-----------



MIRL Rwy 16-34  
REIL Rwy's 16 and 34



CATEGORY	A	B	C	D
LPV DA	1507-1		250 (300-1)	
LNAV/VNAV DA	1627-1¼		370 (400-1¼)	
LNAV MDA	1660-1 403 (400-1)		1660-1½ 403 (400-1½)	
<b>C</b> CIRCLING	1780-1 514 (600-1)		1840-1½ 574 (600-1½) 2060-2½ 794 (800-2½)	

NC-1, 15 MAY 2025 to 12 JUN 2025

NC-1, 15 MAY 2025 to 12 JUN 2025