

APP CRS	Rwy Idg	3199
275°	TDZE	919
	Apt Elev	920

RNAV (GPS) RWY 27

PRICES (9G2)

RNP APCH.

▼ Use Flint altimeter setting; when not received, use Howell altimeter setting.
▲ NA Procedure NA at night. Rwy 27 helicopter visibility reduction below 1 SM NA.

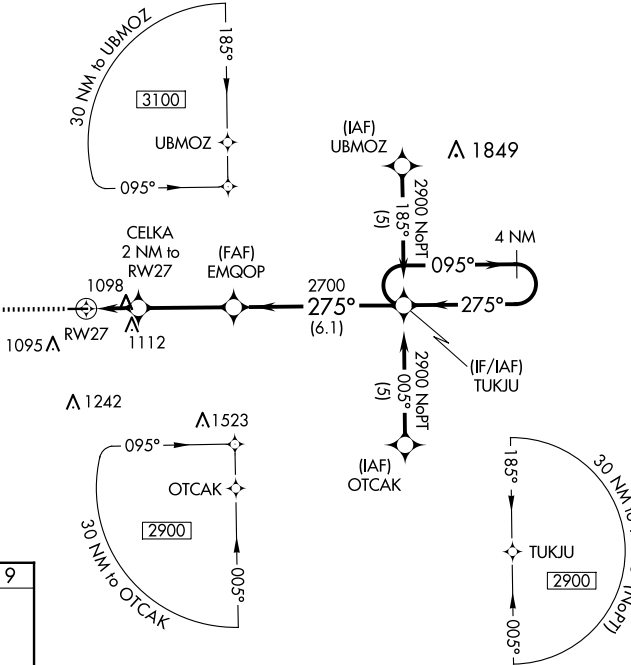
MISSED APPROACH: Climb to 3100 direct OQONI and hold.

FNT ASOS
133.15

GREAT LAKES APP CON ★
128.55 257.9

UNICOM
123.0 (CTAF) 0

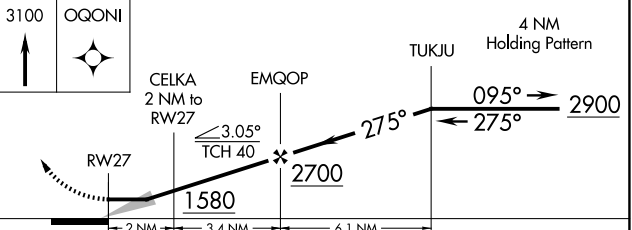
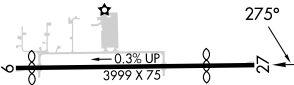
MISSED APCH FIX



EC-1, 15 MAY 2025 to 12 JUN 2025

EC-1, 15 MAY 2025 to 12 JUN 2025

ELEV **920** TDZE **919**



REIL Rwy 9 **0**
 MIRL Rwy 9-27 **0**

CATEGORY	A	B	C	D
LNAV MDA	1400-1 481 (500-1)			NA