

VORTAC MMB 115.6 Chan 103	APP CRS 062°	Rwy Idg TDZE Apt Elev N/A N/A 2189
---	------------------------	--

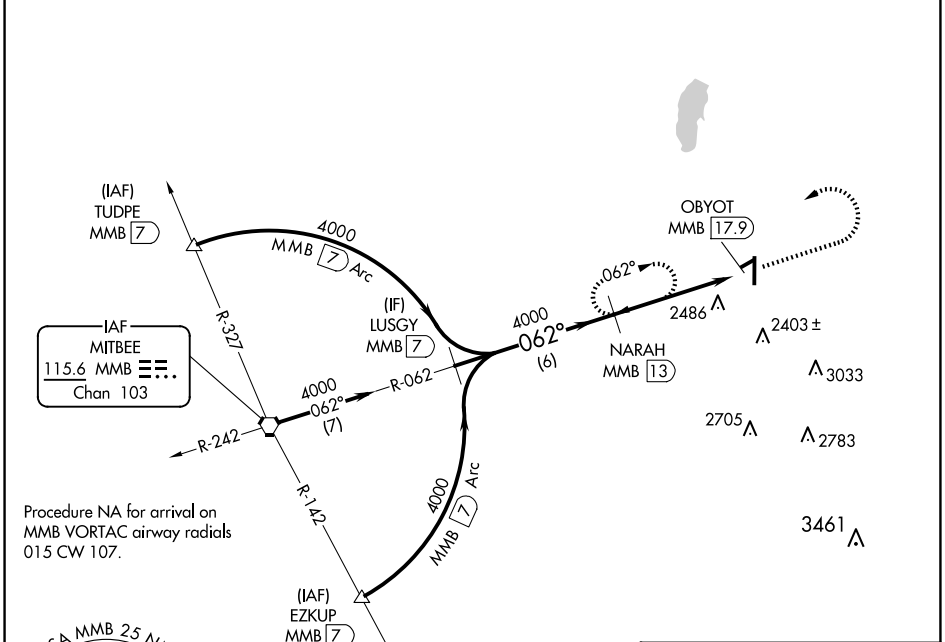
VOR/DME-A

WEST WOODWARD (WWR)

⚠ When local altimeter setting not received, use Gage altimeter setting and increase all MDA 40 feet. Circling NA to Rwy 5 and 23.

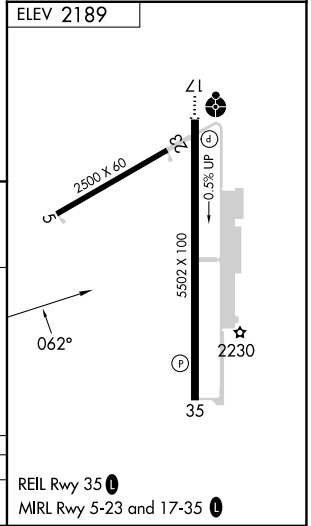
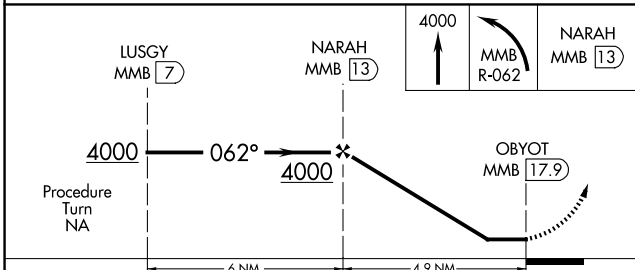
MISSED APPROACH: Climb to 4000, then left turn via MMB VORTAC R-062 to NARAH/MMB VORTAC 13 DME and hold.

AWOS-3 118.425	KANSAS CITY CENTER 126.95 379.2	UNICOM 122.8 (CTAF) 0
--------------------------	---	---------------------------------



SC-1, 15 MAY 2025 to 12 JUN 2025

SC-1, 15 MAY 2025 to 12 JUN 2025



CATEGORY	A	B	C	D
CIRCLING	2820-1 631 (700-1)	2840-1 651 (700-1)	2940-2¼ 751 (800-2¼)	2960-2½ 771 (800-2½)