

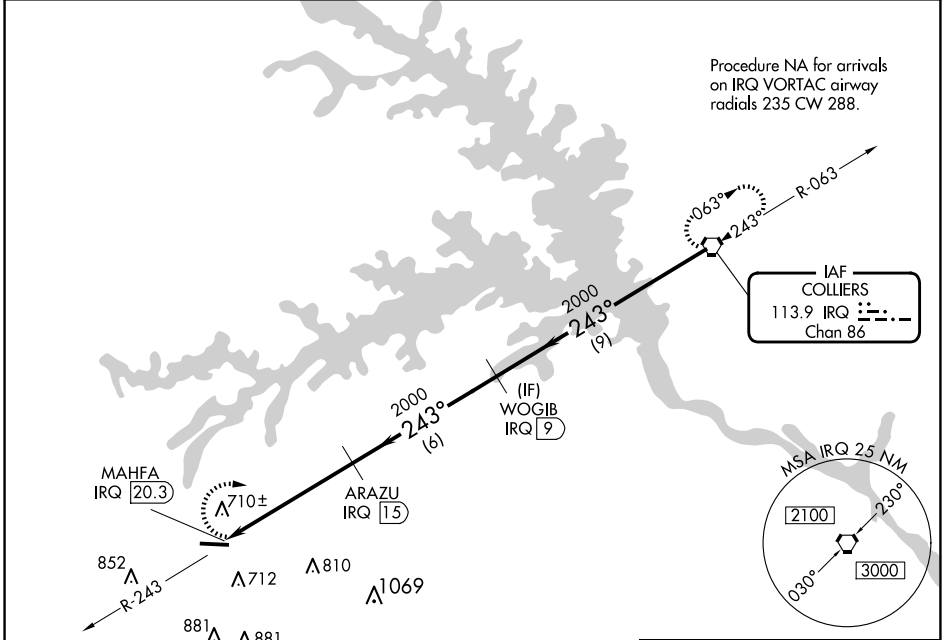
VORTAC IRQ 113.9 Chan 86	APP CRS 243°	Rwy Idg TDZE Apt Elev	N/A N/A 501
--	------------------------	-----------------------------	--

VOR/DME-A

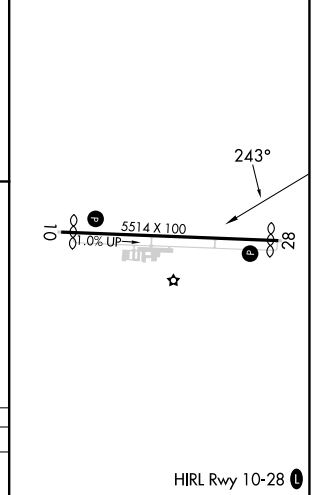
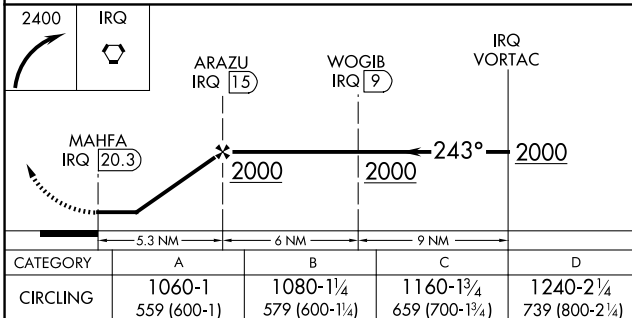
THOMSON/McDUFFIE COUNTY (HQU)

<p>▼ Visibility reduction by helicopters NA. When local altimeter setting not received, use Daniel Field altimeter setting and increase all MDAs 80 feet and visibility Cat C ¼ SM and Cat D ½ SM.</p> <p>▲</p>	<p>MISSED APPROACH: Climbing right turn to 2400 direct IRQ VORTAC and hold.</p>
---	---

AWOS-3 120.625	AUGUSTA APP CON ★ 124.45 270.3	UNICOM 122.8 (CTAF) 1
--------------------------	--	--



ELEV 501 **D**



SE-4, 15 MAY 2025 to 12 JUN 2025

SE-4, 15 MAY 2025 to 12 JUN 2025