

VORTAC COT <b>115.8</b> Chan <b>105</b>	APP CRS <b>352°</b>	Rwy Idg TDZE Apt Elev	<b>N/A</b> <b>N/A</b> <b>586</b>
---	------------------------	-----------------------------	--

# VOR/DME or GPS-A

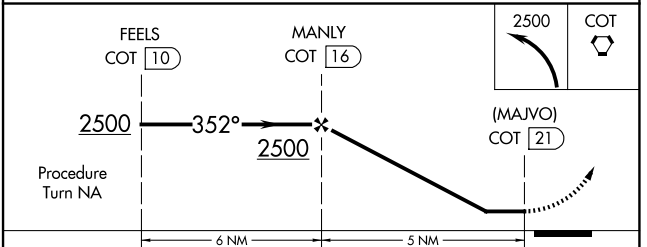
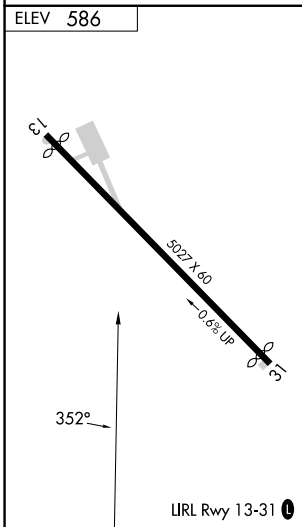
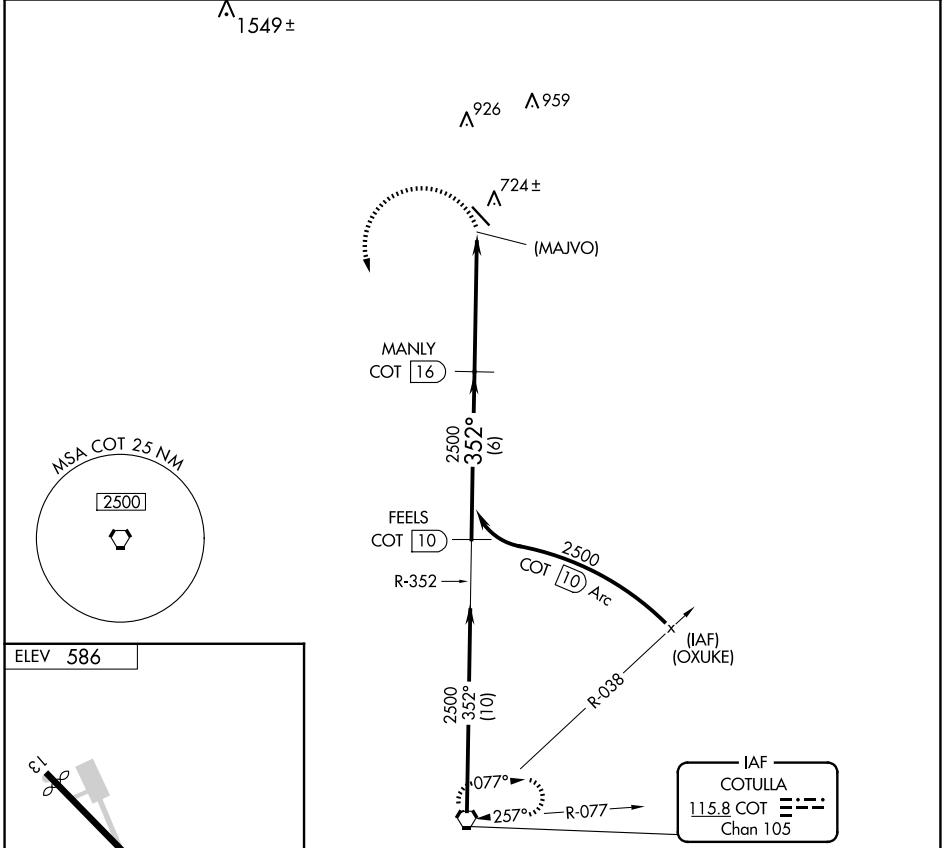
MC KINLEY FLD (T30)

**NA** Use Cotulla altimeter setting. Procedure NA at night.

MISSED APPROACH: Climbing left turn to 2500 direct COT VORTAC and hold.

HOUSTON CENTER **134.6 322.5**

UNICOM **122.8 (CTAF)**



CATEGORY	A	B	C	D
CIRCLING	1120-1	534 (600-1)	1120-1½ 534 (600-1½)	NA