

VORTAC MAF 112.6 Chan 73	APP CRS 239°	Rwy Idg TDZE Apt Elev 5571 2800 2805
--	------------------------	--

VOR RWY 25

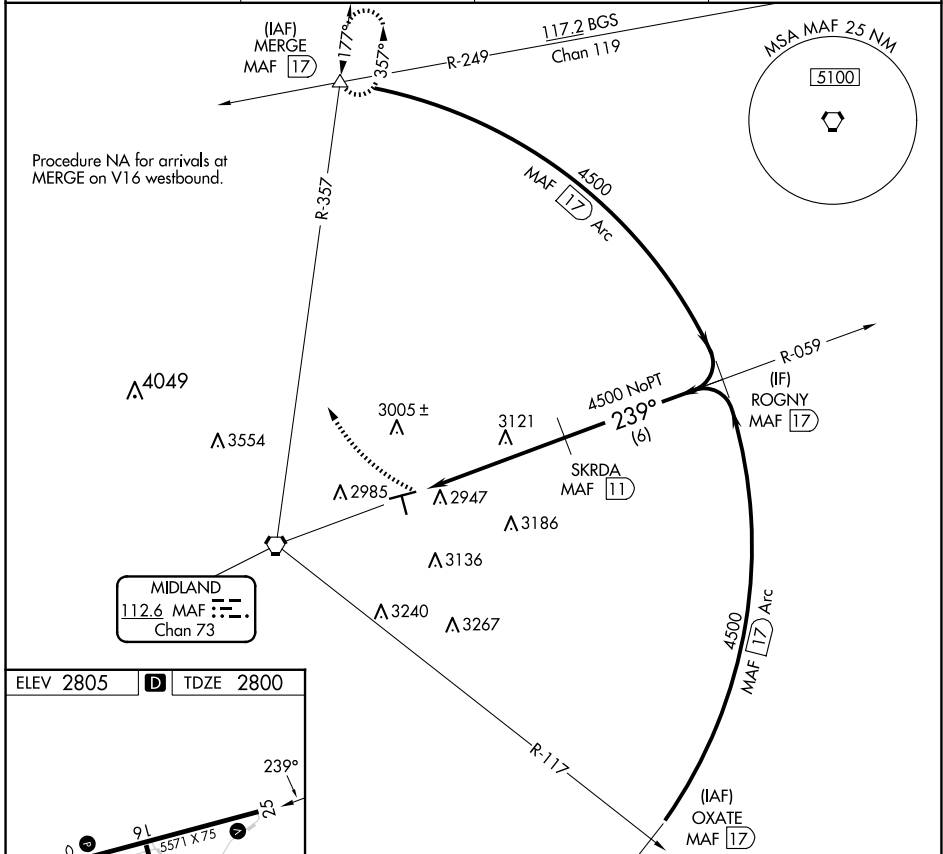
MIDLAND AIRPARK (MIDD)

DME required. RADAR required for procedure entry at OXATE.

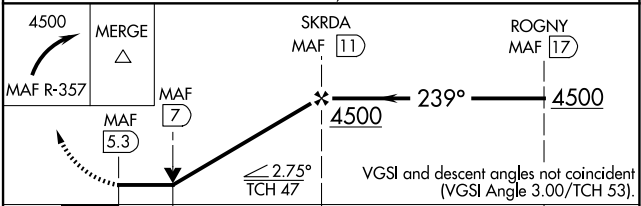
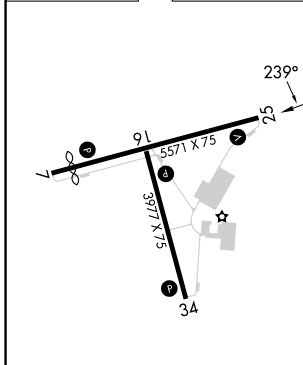
▼ Rwy 25 helicopter visibility reduction below 3/4 SM NA.

▲ MISSED APPROACH: Climbing right turn to 4500 on MAF VORTAC R-357 to MERGE INT/17 DME and hold.

AWOS-3 118.125	MIDLAND APP CON * 124.6 290.4	CLNC DEL 121.8	UNICOM 122.7 (CTAF) 0
--------------------------	---	--------------------------	---------------------------------



ELEV 2805	D	TDZE 2800
-----------	---	-----------



CATEGORY	A	B	C	D
S-25	3400-1	600 (600-1)	3400-1¾	600 (600-1¾)
CIRCLING	3400-1	595 (600-1)	3440-1¾ 635 (700-1¾)	3700-3 895 (900-3)

SC-3, 15 MAY 2025 to 12 JUN 2025

SC-3, 15 MAY 2025 to 12 JUN 2025