

WAAS CH <b>49201</b> W18A	APP CRS <b>181°</b>	Rwy ldg <b>6503</b> TDZE <b>298</b> Apt Elev <b>298</b>
---------------------------------	------------------------	---

# RNAV (GPS) RWY 18

HATTIESBURG/LAUREL RGNL (PIB)

RNP APCH-GPS.

**T**  
**A** For uncompensated Baro-VNAV systems, LNAV/VNAV NA below -15°C or above 54°C.

MALSR

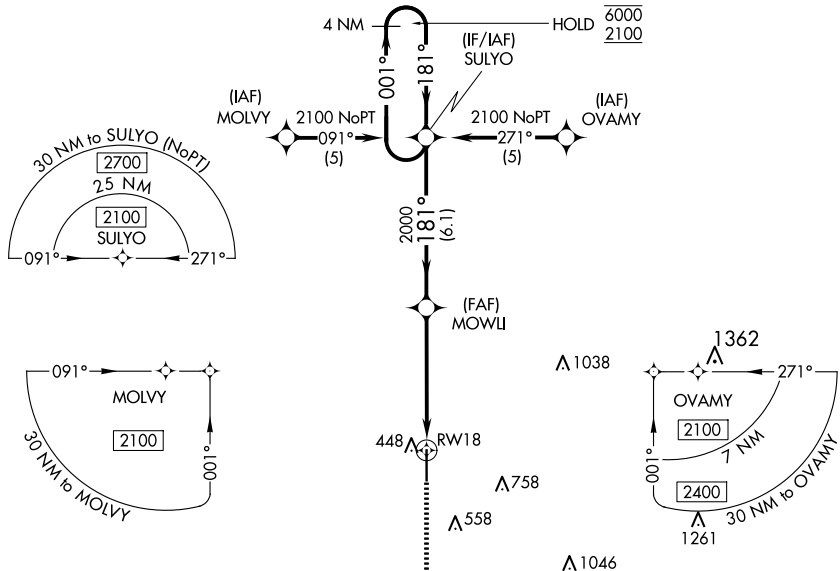


MISSED APPROACH:  
Climb to 2000 direct  
REWYO and hold.

AWOS-3PT  
**128.325**

HOUSTON CENTER  
**126.8 327.8**

UNICOM  
**123.0 (CTAF) 1**



SC-4, 15 MAY 2025 to 12 JUN 2025

SC-4, 15 MAY 2025 to 12 JUN 2025

ELEV 298	TDZE 298
----------	----------

181°  
81  
6503 X 150  
36  
352  
P

HIRL Rwy 18-36 1  
REIL Rwy 18 and 36 1

MISSED APCH FIX	REWYO	DE SOTO 1 MOA	2000	REWYO
4 NM	4 NM			
4 NM Holding Pattern	SULYO	MOWLI	2000	1.4 NM to RWY 18
6000 ← 001°	2100 → 181°	181°	2000	RWY 18
GP 3.00° TCH 60				
	6.1 NM	3.7 NM	1.4	
CATEGORY	A	B	C	D
LPV DA		498-1/2	200 (200-1/2)	
LNAV/VNAV DA		691-5/8	393 (400-3/8)	
LNAV MDA	820-1/2	522 (600-1/2)	820-1	522 (600-1)
CIRCLING	820-1	522 (600-1)	1120-2 1/2 822 (900-2 1/2)	1120-2 3/4 822 (900-2 3/4)