

VORTAC ANX <b>115.15</b> Chan <b>98(Y)</b>	APP CRS <b>229°</b>	Rwy Idg TDZE Apt Elev <b>1004</b>	<b>N/A</b> <b>N/A</b>
--	------------------------	--	--------------------------

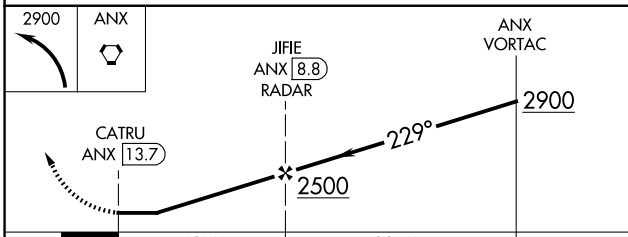
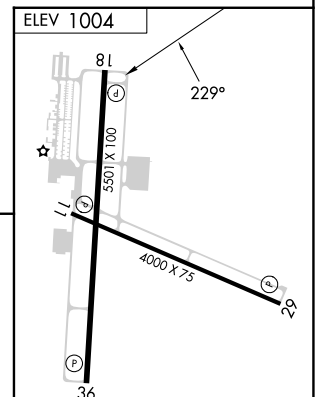
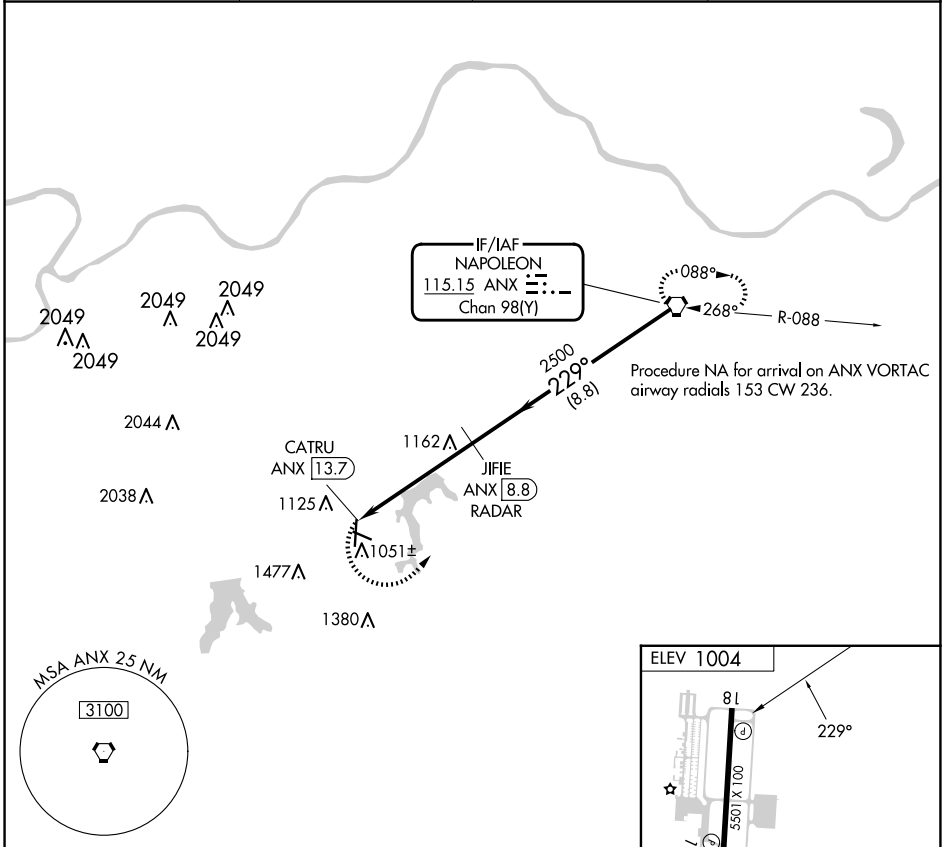
**VOR-A**

KANSAS CITY/LEE'S SUMMIT RGNL (LX'T)

**⚠** DME or RADAR required. When local altimeter setting not received, use Kansas City Downtown/Wheeler Fld altimeter setting and increase all MDA 80 feet, and Cat C and D visibility ¼ mile.

**⚠** MISSED APPROACH: Climbing left turn to 2900 direct ANX VORTAC and hold.

ASOS <b>124.175</b>	KANSAS CITY APP CON <b>118.4 307.35</b>	CLNC DEL <b>118.45</b>	UNICOM <b>122.8 (CTAF) 0</b>
------------------------	--	---------------------------	---------------------------------



CATEGORY	A	B	C	D	FAF to MAP 4.9 NM					
<b>C</b> CIRCLING	1440-1 436 (500-1)	1540-1 536 (600-1)	1780-2¼ 776 (800-2¼)	1780-2½ 776 (800-2½)	Knots	60	90	120	150	180
					Min:Sec	4:54	3:16	2:27	1:58	1:38

**VOR-A**

NC-3, 15 MAY 2025 to 12 JUN 2025

NC-3, 15 MAY 2025 to 12 JUN 2025