

WAAS CH 99416 W02A	APP CRS 020°	Rwy Idg TDZE Apt Elev	5002 991 996
--	------------------------	-----------------------------	---

RNAV (GPS) RWY 2

SCHENCK FLD (ICL)

RNP APCH - GPS.

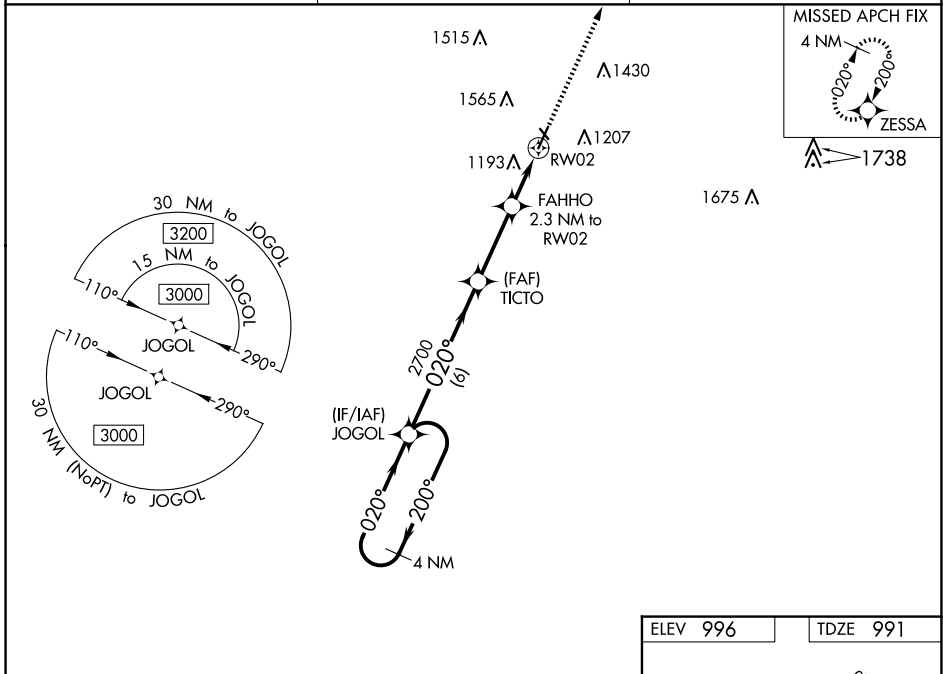
▼ For uncompensated Baro-VNAV systems, LNAV/VNAV NA below -16°C (4°F) or above 54°C (130°F). Circling NA west of Rwy 2-20. Circling NA to Rwys 13 and 31. Rwy 2 helicopter visibility reduction below ¼ SM NA.

MISSED APPROACH: Climb to 3000 direct ZESSA and hold.

AWOS-3
132.025

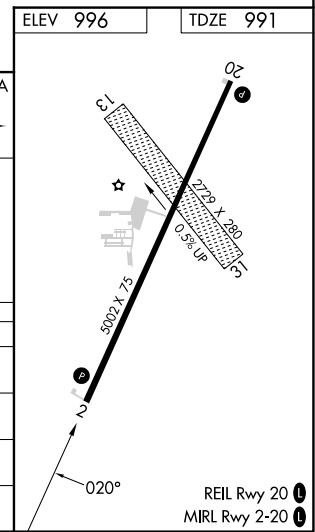
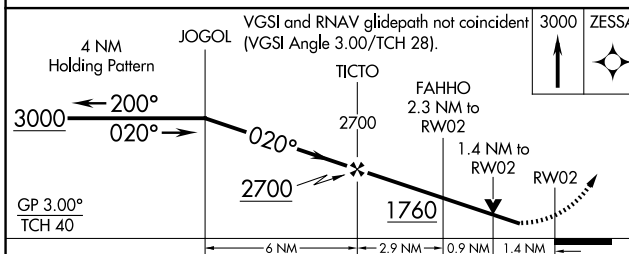
MINNEAPOLIS CENTER
119.6 290.4

UNICOM
122.8 (CTAF)



NC-3, 15 MAY 2025 to 12 JUN 2025

NC-3, 15 MAY 2025 to 12 JUN 2025



CATEGORY	A	B	C	D
LPV DA	1241-1 250 (300-1)			
LNAV/VNAV DA	1489-1 3/8 498 (500-1 3/8)			
LNAV MDA	1460-1	469 (500-1)	1460-1 3/8	469 (500-1 3/8)
CIRCLING	1540-1 544 (600-1)	1720-1 724 (800-1)	1780-2 1/4 784 (800-2 1/4)	1780-2 1/2 784 (800-2 1/2)