

VORTAC BRO <b>116.3</b> Chan 110	APP CRS <b>357°</b>	Rwy Idg TDZE Apt Elev	<b>N/A</b> <b>N/A</b> <b>19</b>
--	------------------------	-----------------------------	---------------------------------------

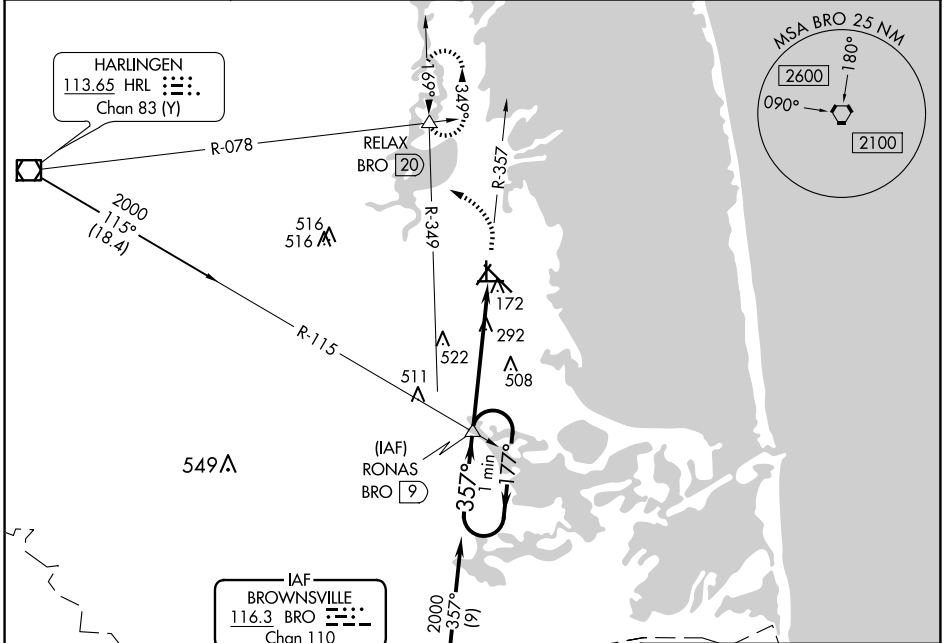
# VOR-A

PORT ISABEL-CAMERON COUNTY (PIL)

**▼** When local altimeter setting not received, use Brownsville altimeter setting and increase all MDA 40 feet and increase Cat C visibility ¼ mile. Circling Rwys 3, 8, 17, 21, 26, 35 NA at night.

**▲ NA** MISSED APPROACH: Climb to 2000 then turn left via BRO R-349 to RELAX INT/BRO 20 DME and hold.

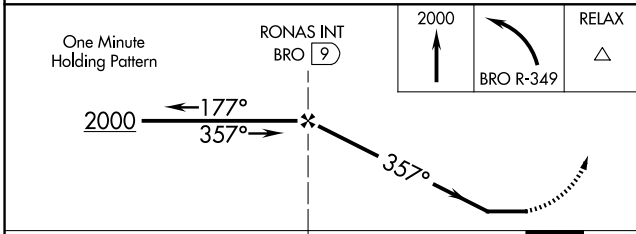
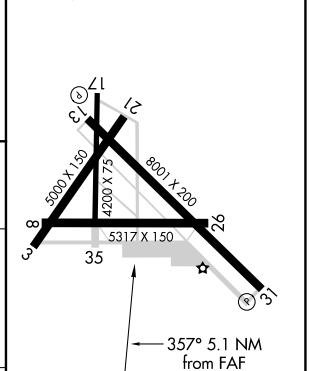
ASOS <b>118.525</b>	VALLEY APP CON <b>119.5 257.6</b>	CINC DEL <b>119.2</b>	UNICOM <b>122.8</b> (CTAF)
------------------------	--------------------------------------	--------------------------	-------------------------------



SC-3, 15 MAY 2025 to 12 JUN 2025

SC-3, 15 MAY 2025 to 12 JUN 2025

ELEV 19  
REIL Rwys 13 and 31  
MIRL Rwy 13-31



CATEGORY	A	B	C	D	FAF to MAP 5.1 NM					
CIRCLING	780-1	761 (800-1)	840-2½	NA	Knots	60	90	120	150	180
			821 (900-2½)		Min:Sec	5:06	3:24	2:33	2:02	1:42

# VOR-A