

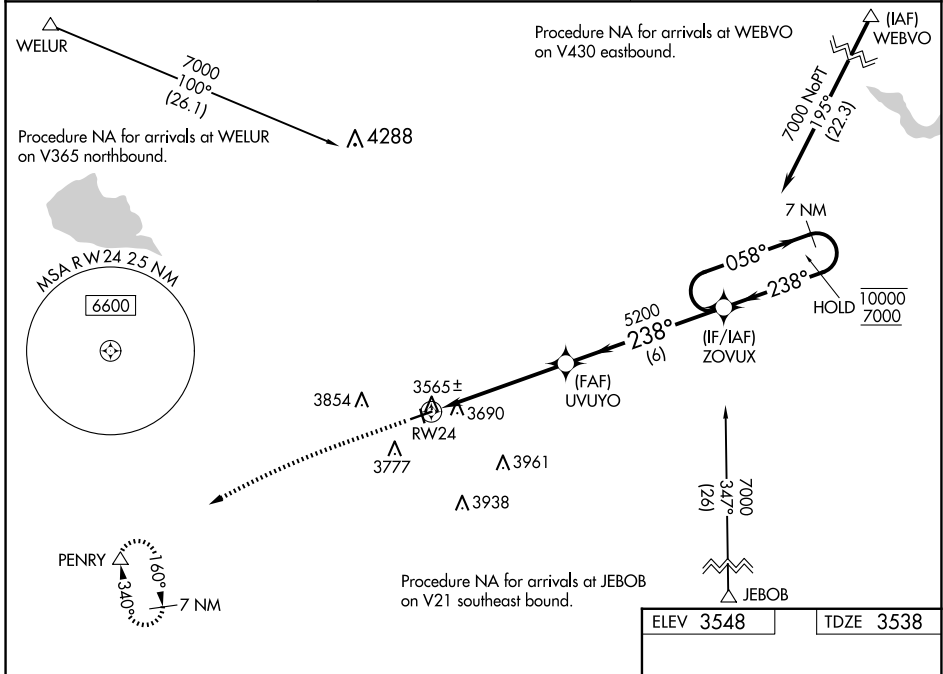
WAAS CH 69642 W24A	APP CRS 238°	Rwy Idg TDZE Apt Elev	4602 3538 3548
--	------------------------	-----------------------------	---

RNAV (GPS) RWY 24

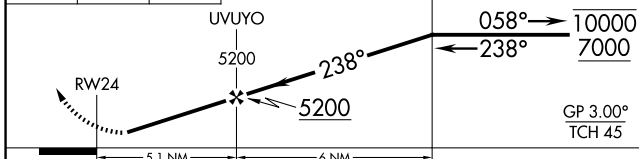
CONRAD (S01)

RNP APCH.	MISSED APPROACH: Climb to 4120 then climbing left turn to 7000 direct PENRY and hold, continue climb-in-hold to 7000.
<p>NA Circling NA to Rwy 15 and 33. Rwy 24 helicopter visibility reduction below 3/4 SM NA. Baro-VNAV NA. Use Cut Bank altimeter setting.</p>	

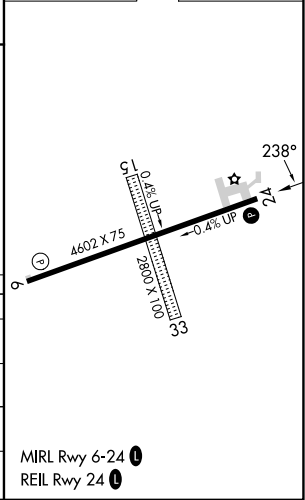
CTB ASOS 119.025	SALT LAKE CITY CENTER 133.4 285.4	AUNICOM 122.8 (CTAF) 0
----------------------------	---	----------------------------------



4120	7000	PENRY	VGSI and RNAV glidepath not coincident (VGSI Angle 3.00/TCH 27).	7 NM Holding Pattern
↑	↶	Δ	ZOVUX	



ELEV 3548	TDZE 3538
-----------	-----------



CATEGORY	A	B	C	D
LPV DA	3905-1		367 (400-1)	
LNAV/VNAV DA	4018-1 3/8		480 (500-1 3/8)	
LNAV MDA	4120-1	582 (600-1)	4120-1 3/4	582 (600-1 3/4)
CIRCLING	4140-1 592 (600-1)	4340-1 792 (800-1)	4460-2 3/4 912 (1000-2 3/4)	4620-3 1072 (1100-3)

MIRL Rwy 6-24 0

REIL Rwy 24 0

CONRAD (S01)

RNAV (GPS) RWY 24

NW-1, 15 MAY 2025 to 12 JUN 2025

NW-1, 15 MAY 2025 to 12 JUN 2025