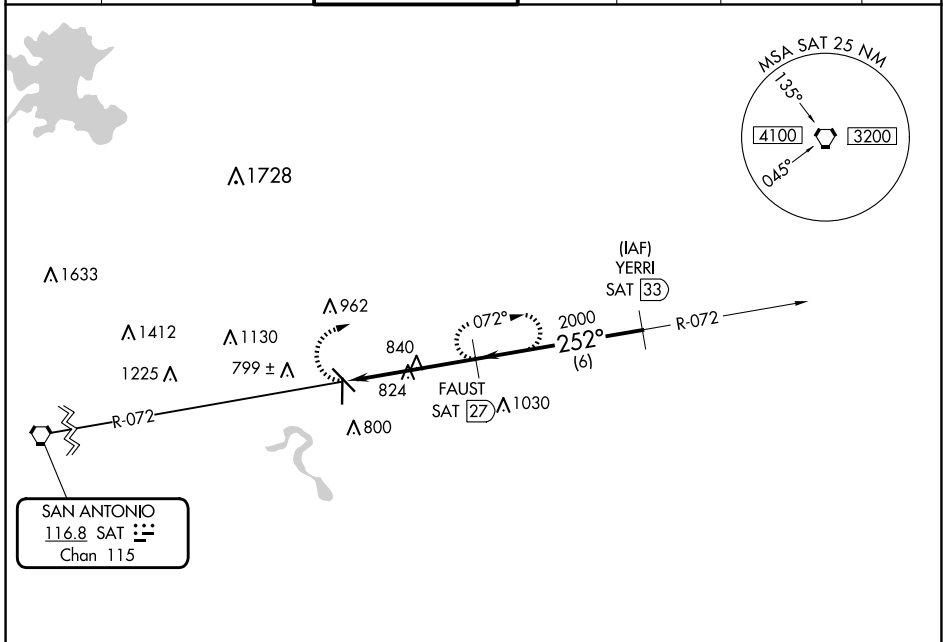


VORTAC SAT 116.8 Chan 115	APP CRS 252°	Rwy Idg TDZE Apt Elev N/A N/A 658
---	------------------------	---

VOR/DME-A
NEW BRAUNFELS NTL (BAZ)

RADAR required for procedure entry.		MISSED APPROACH: Climbing right turn to 2500 on SAT R-072 to FAUST/27 DME and hold.			
-------------------------------------	--	---	--	--	--

ATIS 119.325	SAN ANTONIO APP CON 124.45 335.625	NEW BRAUNFELS TOWER* 127.05 (CTAF) 285.4	GND CON 120.175	CLNC DEL 134.75	CLNC DEL 134.75 (When twr closed)	UNICOM 122.7
------------------------	--	--	---------------------------	---------------------------	--	------------------------



SC-3, 15 MAY 2025 to 12 JUN 2025

SC-3, 15 MAY 2025 to 12 JUN 2025

