

WAAS CH 49121 W24A	APP CRS 246°	Rwy Idg 5503 TDZE 1448 Apt Elev 1448
--	------------------------	---

RNAV (GPS) RWY 24

HABERSHAM COUNTY (AJR)

RNP APCH - GPS.

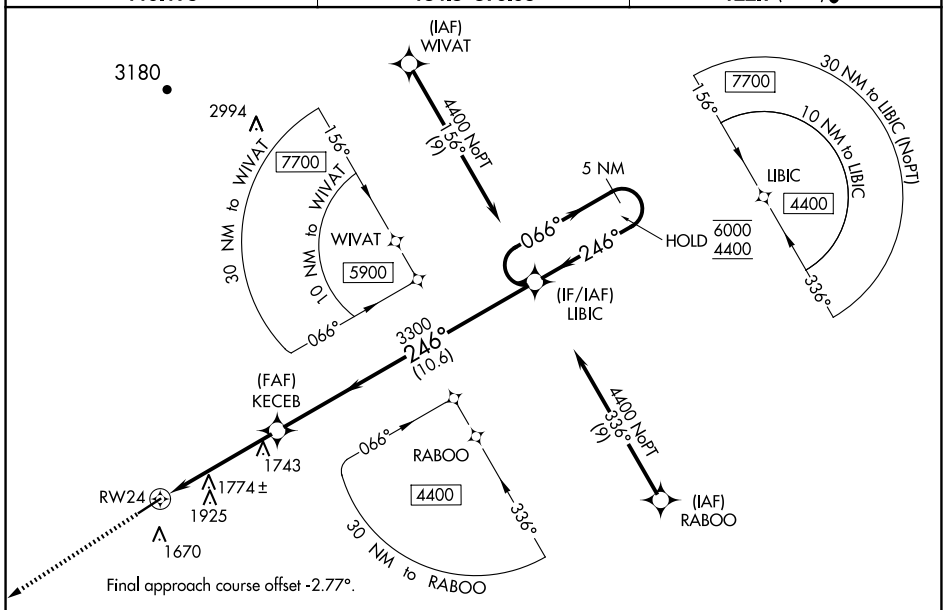
⚠ Rwy 24 helicopter visibility reduction below 1 SM NA.
Procedure NA at night.

MISSED APPROACH: Climb to 4200 direct EYUBU and hold.

AWOS-3
119.175

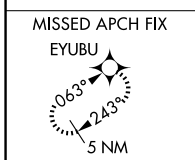
ATLANTA CENTER
134.8 379.95

UNICOM
122.7 (CTAF) 0

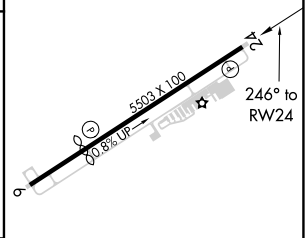
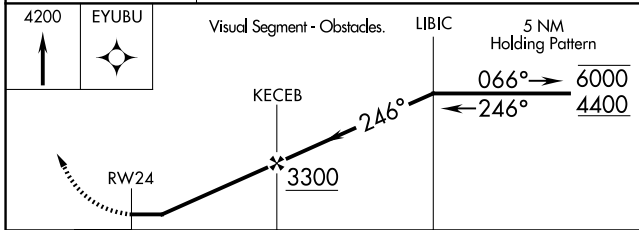


SE-4, 15 MAY 2025 to 12 JUN 2025

SE-4, 15 MAY 2025 to 12 JUN 2025



ELEV 1448	D	TDZE 1448
-----------	----------	-----------



CATEGORY	A	B	C	D
LP MDA	2000-1	552 (600-1)	2000-1 ⁵ / ₈	552 (600-1 ⁵ / ₈)
LNAV MDA	2040-1	592 (600-1)	2040-1 ³ / ₄	592 (600-1 ³ / ₄)
C CIRCLING	2100-1 652 (700-1)	2280-1 ¹ / ₄ 832 (900-1 ¹ / ₄)	2280-2 ¹ / ₂ 832 (900-2 ¹ / ₂)	2280-2 ³ / ₄ 832 (900-2 ³ / ₄)

MIRL Rwy 6-24 0