

WAAS CH <b>58321</b> <b>W33A</b>	APP CRS <b>330°</b>	Rwy Idg <b>5000</b> TDZE <b>1713</b> Apt Elev <b>1718</b>
----------------------------------------	------------------------	-----------------------------------------------------------------

# RNAV (GPS) RWY 33

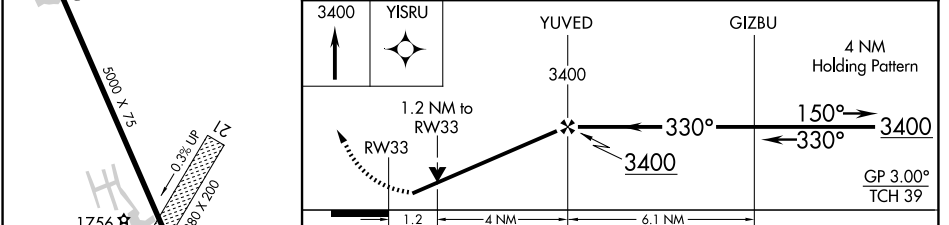
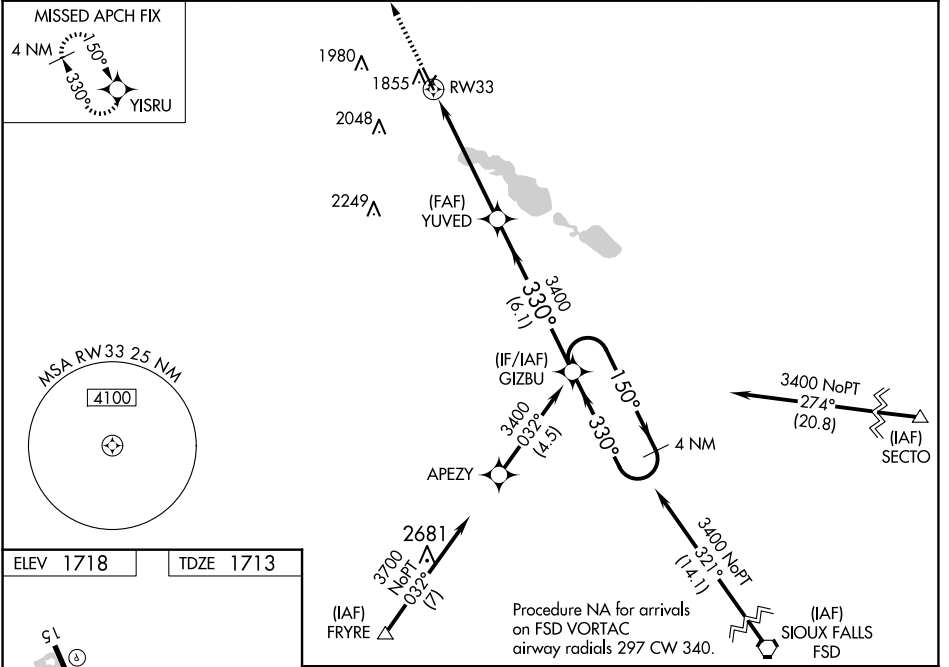
MADISON MUNI (MDS)

RNP APCH - GPS.

⚠ For uncompensated Baro-VNAV systems, LNAV/VNAV NA below -18°C or above 33°C. Rwy 33 helicopter visibility reduction below 3/4 SM NA. When local altimeter setting not received, use Brookings altimeter setting: increase LPV DA to 2021 feet; increase LNAV/VNAV DA to 2071 feet and all visibilities 1/4 SM; increase all MDAs 60 feet and visibility LNAV and Circling Cats C and D 1/4 SM. Circling NA to Rwy 3 and 21. Baro-VNAV NA when using Brookings altimeter setting.

MISSED APPROACH: Climb to 3400 direct YISRU and hold.

AWOS-3 <b>118.35</b>	MINNEAPOLIS CENTER <b>132.05 317.4</b>	GCO <b>121.725</b>	UNICOM <b>122.8 (CTAF)</b>
-------------------------	-------------------------------------------	-----------------------	-------------------------------



CATEGORY	A	B	C	D
LPV DA	1963-1 250 (300-1)			
LNAV/VNAV DA	2013-1 300 (300-1)			
LNAV MDA	2120-1	407 (500-1)	2120-1½	407 (500-1½)
CIRCLING	2180-1	462 (500-1)	2400-2 682 (700-2)	2400-2¼ 682 (700-2¼)

NC-1, 15 MAY 2025 to 12 JUN 2025

NC-1, 15 MAY 2025 to 12 JUN 2025