

(ADELL7.ADELL) 24305

AL-6063 (FAA)

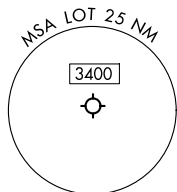
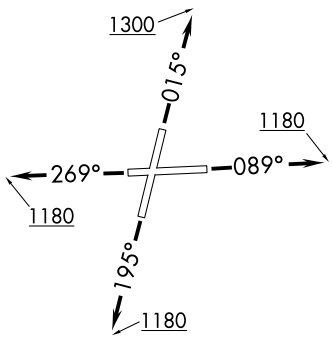
LEWIS UNIVERSITY (L<sup>OT</sup>)  
CHICAGO/ROMEOVILLE, ILLINOIS

# ADELL SEVEN DEPARTURE (RNAV)

CHICAGO DEP CON  
119.35 354.075  
D-ATIS  
126.675  
GND CON  
120.425  
LEWIS TOWER \*  
134.8 (CTAF)

RNAV 1 - DME/DME/IRU or GPS.  
RADAR required. RADAR required for non-GPS equipped aircraft.

**TOP ALTITUDE:  
3000**



### TAKEOFF MINIMUMS:

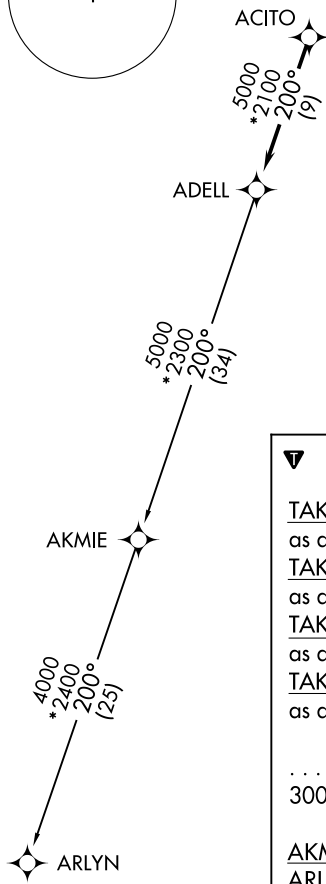
- Rwy 2: Standard with minimum climb of 420' per NM to 2700.
- Rwy 9: Standard with minimum climb of 310' per NM to 2700.
- Rwy 20: Standard with minimum climb of 370' per NM to 2700.
- Rwy 27: Standard with minimum climb of 340' per NM to 2700.

NOTE: Turbojet departures maintain 250K until advised by ATC.

NOTE: AKMIE Transition: For aircraft inbound to BMI, SPI, PIA, or as assigned by ATC.

EC-3, 15 MAY 2025 to 12 JUN 2025

EC-3, 15 MAY 2025 to 12 JUN 2025



**▼ DEPARTURE ROUTE DESCRIPTION**

TAKEOFF RUNWAY 2: Climb on heading 015° to 1300, then as assigned by ATC, for vectors to ACITO, thence. . . .

TAKEOFF RUNWAY 9: Climb on heading 089° to 1180, then as assigned by ATC, for vectors to ACITO, thence. . . .

TAKEOFF RUNWAY 20: Climb on heading 195° to 1180, then as assigned by ATC, for vectors to ACITO, thence. . . .

TAKEOFF RUNWAY 27: Climb on heading 269° to 1180, then as assigned by ATC, for vectors to ACITO, thence. . . .

. . . . on track 200° to ADELL, then on (transition). Maintain 3000. Expect filed altitude 10 minutes after departure.

AKMIE TRANSITION (ADELL7.AKMIE):  
ARLYN TRANSITION (ADELL7.ARLYN):

NOTE: Chart not to scale.

**ADELL SEVEN DEPARTURE (RNAV)**  
(ADELL7.ADELL) 31OCT24

CHICAGO/ROMEOVILLE, ILLINOIS  
LEWIS UNIVERSITY (L<sup>OT</sup>)